

About Town

The shows and swimming pool at the East Side Recreation Building will be closed beginning Monday, August 31 for a few days for necessary repairs.

Announcement

HUGO S. PEARSON Dealer in Range and Fuel Oil and Ice Has Moved From 187 Maple Street To 113 Pearl St. Same Phone Connection

Home Insulation

Means Fuel Saving, Use RUSCO All Weather Triple Storm Windows

Estimates given on cost of completely insulating your walls and ceilings with ROCK WOOL.

MAYNARD A. CLOUGH 140 FAYARD ST. TEL. 5243 Local Agent for Bartlett-Brainerd Co., Hartford

R. J. AMENTA

Expert Instruction on Spanish Guitar, Banjo and Mandolin For Beginners and Advanced Pupils. Private Lessons Only. Telephone Hartford 6-4737, Mornings, for Information.

ARMY & NAVY CLUB, Inc.

Saturday, August 29 AT 8:15 P. M. 25 GAMES! (20) \$50.00 GAMES! (10) \$20.00 GAMES! ALL FOR \$1.00! Ample Parking in Rear of Club.

MANCHESTER TAXI

CALL 65881. Prompt! (Suite) (Street) M. O'NEILL, Mgr. 101 Forest Place

Advertise in The Herald—It Pays



DON'T MISS IT!

IT'S THE YEAR'S BIGGEST EVENT!

K. OF C. GROUNDWORK

STARTS MONDAY NIGHT! ALL NEXT WEEK—THROUGH LABOR DAY, SEPT. 7th NIGHTLY GATE PRIZE—\$25 WAR BOND Bingo—Novelty Booths—All Rides 10c! FUN FOR EVERYONE

Three Appeals Of Zoning Law

Board to Pass Upon Requests for Changes At Thursday Session.

Is Given Surprise On Anniversary

Mrs. Amanda C. Gotberg, of 21 Bridge street, was surprised on the occasion of her recent birthday by about thirty of her local friends and relatives.

Southern Students To Furnish Music

Students from several of the Southern Colleges will furnish music at the morning worship service tomorrow 10-15 at the Episcopal church.

ALICE COFFAN (Known As Queen Alice) HOSPITALITY MEDAL

Seventy-seventh anniversary of her birth on August 29, 1865. Mrs. Coffan is a member of the Episcopal church.

FILMS DEVELOPED AND PRINTED

24-HOUR SERVICE Film Deposit Box At Store Entrance KEMP'S

MANCHESTER TAXI

CALL 65881. Prompt! (Suite) (Street) M. O'NEILL, Mgr. 101 Forest Place

MANCHESTER TAXI

CALL 65881. Prompt! (Suite) (Street) M. O'NEILL, Mgr. 101 Forest Place

MANCHESTER TAXI

CALL 65881. Prompt! (Suite) (Street) M. O'NEILL, Mgr. 101 Forest Place

MANCHESTER TAXI

CALL 65881. Prompt! (Suite) (Street) M. O'NEILL, Mgr. 101 Forest Place

MANCHESTER TAXI

CALL 65881. Prompt! (Suite) (Street) M. O'NEILL, Mgr. 101 Forest Place

MANCHESTER TAXI

CALL 65881. Prompt! (Suite) (Street) M. O'NEILL, Mgr. 101 Forest Place

MANCHESTER TAXI

CALL 65881. Prompt! (Suite) (Street) M. O'NEILL, Mgr. 101 Forest Place

Heard Along Main Street

And on Some of Manchester's Side Streets, Too

Notice

Effective Monday, August 31, Rainbow Cleaners and Launderers are discontinuing their collection and delivery service.

Notice

The reason for this is that so few people have taken advantage of this service. Most people (9 out of 10) prefer leaving and picking up their cleaning and laundry at their convenience.

RAINBOW CLEANERS & LAUNDERERS

HARRISON ST. MANCHESTER. Temporary Dispensary Works

LEGION BINGO TONIGHT

Admission 50c. Six Door Prizes. 25 Big Games.

British Smash

Big Axis Base Near El Daba

Warships Fight Way

Home Under Ceaseless Bombing; Destruction Covers Wide Area.

Special Session

Of Beth Shalom

Free Enlargement

With Every Roll of Film 40c. ELITE STUDIO

CASH LOANS

When in loan is necessary, we will not fail to serve the borrower.

PERSONAL FINANCE CO.

Personal loans made on basis of character and ability to pay.

DINE and DANCE at DANIE'S RESTAURANT

16 West Center Street. Old Fellows Building. ITALIAN and AMERICAN COOKING.

NOTICE

Effective Monday, August 31, Rainbow Cleaners and Launderers are discontinuing their collection and delivery service.

Notice

The reason for this is that so few people have taken advantage of this service. Most people (9 out of 10) prefer leaving and picking up their cleaning and laundry at their convenience.

RAINBOW CLEANERS & LAUNDERERS

HARRISON ST. MANCHESTER. Temporary Dispensary Works

LEGION BINGO TONIGHT

Admission 50c. Six Door Prizes. 25 Big Games.

British Smash

Big Axis Base Near El Daba

Warships Fight Way

Home Under Ceaseless Bombing; Destruction Covers Wide Area.

Special Session

Of Beth Shalom

Free Enlargement

With Every Roll of Film 40c. ELITE STUDIO

CASH LOANS

When in loan is necessary, we will not fail to serve the borrower.

PERSONAL FINANCE CO.

Personal loans made on basis of character and ability to pay.

DINE and DANCE at DANIE'S RESTAURANT

16 West Center Street. Old Fellows Building. ITALIAN and AMERICAN COOKING.

Average Daily Circulation

7,494. Member of the Audit Bureau of Circulations.

Swift British Raid Upon Small Island

Tracily Admitted

Italians Report Attack On Antikythera Made Friday Night

New Surge of Air and Sea Activity on Axis Lifelines Becomes Evident

Old Buildings Now Holding Wheat Crop

Almost Every Unoccupied Structure Bulging With Grain as Result of Big Harvest.

Chinese 9 Miles From Nanchang

Smash Japs in Milne Bay Area

British Smash

Big Axis Base Near El Daba

Warships Fight Way

Home Under Ceaseless Bombing; Destruction Covers Wide Area.

Special Session

Of Beth Shalom

Free Enlargement

With Every Roll of Film 40c. ELITE STUDIO

CASH LOANS

When in loan is necessary, we will not fail to serve the borrower.

PERSONAL FINANCE CO.

Personal loans made on basis of character and ability to pay.

DINE and DANCE at DANIE'S RESTAURANT

16 West Center Street. Old Fellows Building. ITALIAN and AMERICAN COOKING.

Mancheater Evening Herald

Manchester—A City of Village Charm. MANCHESTER, CONN., MONDAY, AUGUST 31, 1942. (SIXTEEN PAGES) PRICE THREE CENTS

Soviets Holding Back Drive on Stalingrad

Nazis Claim Advance

Prices Climb For Several Chief Foods

Ceilings Slipping Up to Plague Nation's Efforts to Keep Down Cost of Living Now.

Bank Detachments Battling in Corridor

Between Don and Volga; Soviet Armored Crews Disable Many of Invaders' Tanks and Bombers.

German Say Assault Forces Drive to Within 15 Miles of Stalingrad

From South; Military Quarters Are Quoted as Saying Battle Has Entered Final Stage; Not Inside Yet.

Half Million In War Bonds

Month's Goal

Manchester Drive During September to Be Coordinated with Theater Campaign.

Flashes!

Five Workmen Killed

House Rates Are Retained

Most of Schedule on Corporation Taxes Favored by Committee.

Vote Bill Goes To Conference

Martin Asks Prompt Action to Make Law Effective for Election.

Scrap Collection in Seattle Far Surpasses Expectations

Two hundred trucks donated by city, county and private firms were assigned to collect the scrap.

Death Sentences

For Five Communists

Treasury Balance

Receipts, \$1,795,932,211; expenses, \$3,378,528,216; net balance, \$1,582,404,000.

The Weather

Forecast of U. S. Weather Bureau. Little Change in Temperature.

Mancheater Evening Herald

Manchester—A City of Village Charm. MANCHESTER, CONN., MONDAY, AUGUST 31, 1942. (SIXTEEN PAGES) PRICE THREE CENTS

Soviets Holding Back Drive on Stalingrad

Nazis Claim Advance

Prices Climb For Several Chief Foods

Ceilings Slipping Up to Plague Nation's Efforts to Keep Down Cost of Living Now.

Bank Detachments Battling in Corridor

Between Don and Volga; Soviet Armored Crews Disable Many of Invaders' Tanks and Bombers.

German Say Assault Forces Drive to Within 15 Miles of Stalingrad

From South; Military Quarters Are Quoted as Saying Battle Has Entered Final Stage; Not Inside Yet.

Half Million In War Bonds

Month's Goal

Flashes!

Five Workmen Killed

House Rates Are Retained

Most of Schedule on Corporation Taxes Favored by Committee.

Vote Bill Goes To Conference

Martin Asks Prompt Action to Make Law Effective for Election.

Scrap Collection in Seattle Far Surpasses Expectations

Two hundred trucks donated by city, county and private firms were assigned to collect the scrap.

Death Sentences

For Five Communists

Treasury Balance

Receipts, \$1,795,932,211; expenses, \$3,378,528,216; net balance, \$1,582,404,000.

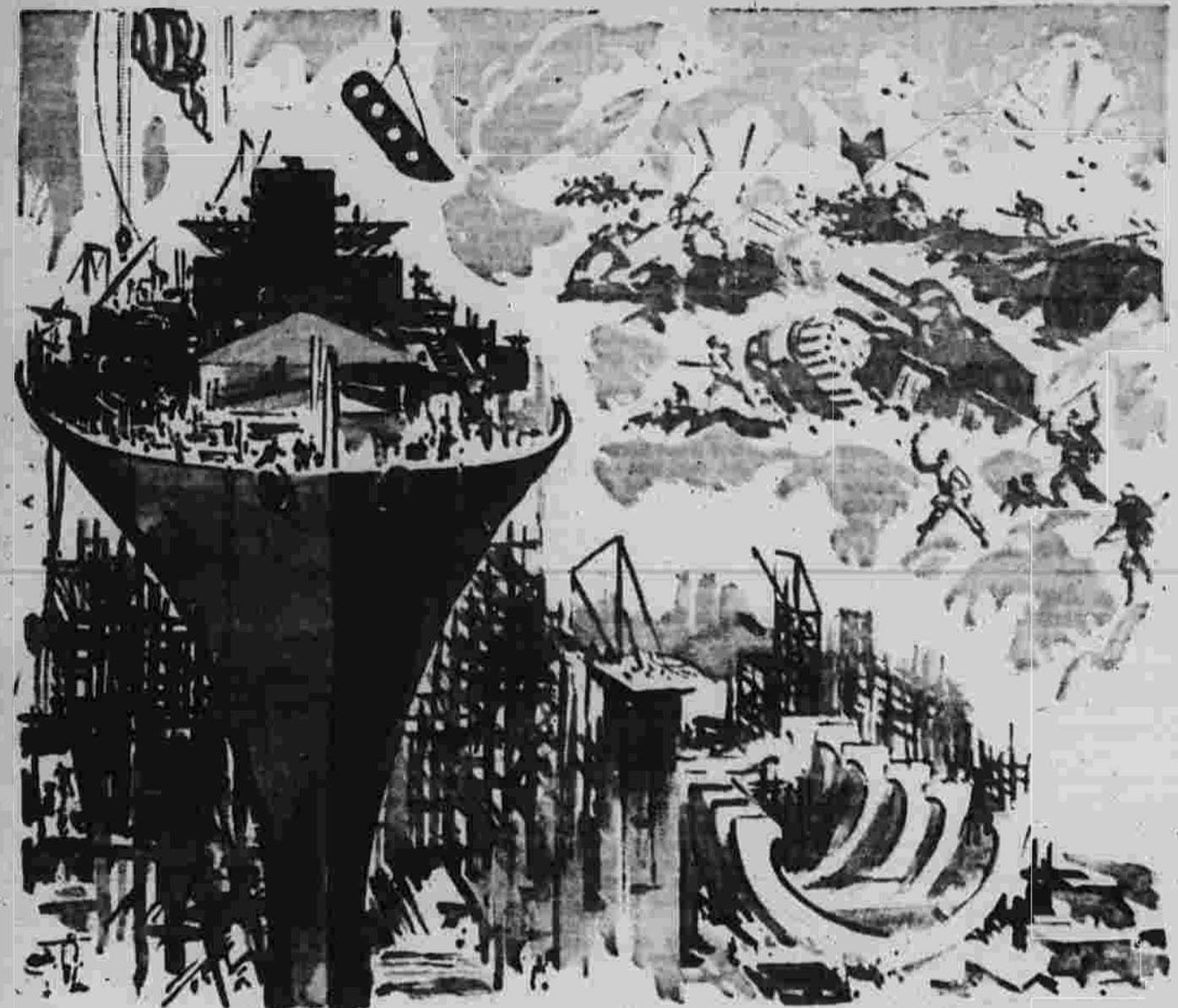


# The Manchester Lumber & Fuel Company

Everett T. McKinney, Mgr.

## And Employees

# URGE YOU TO BUY BONDS



### During September — Payroll Savings Month. Salute To Our Heroes And To Labor.

# EVERYBODY EVERY PAYDAY 10%

To Buy Ships, Planes, Tanks, Ammunition And A Hundred And One Other Needs For Our Fighting Men.

### Naval Medical Center Ready

#### Roosevelt Will Realize Dream Come True in Dedication Today

Washington, Aug. 31.—President Roosevelt will realize a dream come true today when he dedicates with a 10-minute speech the great concrete towered Naval Medical Center at Bethesda, Md.

The occasion will mark the 10th anniversary of the establishment of the Navy's Bureau of Medicine and Surgery and the formal christening of an important building which the president personally helped design in collaboration with the War Relocation Authority.

The address will be part of a 30-minute broadcast to be heard by American Naval medical units throughout the world. It is expected to recall the heroic deeds of Naval doctors in the past century and to underline the fact that while billions are being spent for death-dealing machines of war other huge outlays are going to protect the sick and wounded.

Mr. Roosevelt's speech is scheduled for 4:30 p. m. e. w. All radio networks will carry his remarks.

The chief executive has two other major addresses scheduled in the next seven days—on Thursday before the International Student Service which will be broadcast to the youth of the world, and the other next Monday, a Labor Day speech on new ways to check inflation.

Participating with the President in the broadcast will be four Naval doctors speaking from as many foreign stations—Capt. Lewis W. Johnson, senior naval medical officer in Iceland; Capt. Howard F. Lawrence, senior Naval medical officer in the Panama Canal Zone; and Capt. J. J. McMillin, commanding officer of the Naval hospital at Paris, France.

The new medical center is made up of a hospital, medical school and dental school. A research unit is nearing completion. The whole is described by the Navy as "a citadel of the most advanced post-graduate instruction and diagnosis and treatment of the Army, Marine Corps and Coast Guard personnel."

**Occupies 350-Acre Tract**  
The center occupies a tract of 350 acres and its huge 210-foot white tower above the administration building can be seen for miles in daylight and also by aviators at night who are guided by its searchlight.

The main building housing the three principal units is built of structural steel and faced with precast-exposed aggregate concrete.

### Three Fliers Get Medals

#### Pilot Rides Handbars Of Japanese Bicycle To Get Back Into Action

General MacArthur's Headquarters, Australia, Aug. 31.—A United States aviator who rode the handbars of a Japanese bicycle to get back into action after he had lost his plane was honored by the War Relocation Authority.

The address will be part of a 30-minute broadcast to be heard by American Naval medical units throughout the world. It is expected to recall the heroic deeds of Naval doctors in the past century and to underline the fact that while billions are being spent for death-dealing machines of war other huge outlays are going to protect the sick and wounded.

Mr. Roosevelt's speech is scheduled for 4:30 p. m. e. w. All radio networks will carry his remarks.

The chief executive has two other major addresses scheduled in the next seven days—on Thursday before the International Student Service which will be broadcast to the youth of the world, and the other next Monday, a Labor Day speech on new ways to check inflation.

Participating with the President in the broadcast will be four Naval doctors speaking from as many foreign stations—Capt. Lewis W. Johnson, senior naval medical officer in Iceland; Capt. Howard F. Lawrence, senior Naval medical officer in the Panama Canal Zone; and Capt. J. J. McMillin, commanding officer of the Naval hospital at Paris, France.

The new medical center is made up of a hospital, medical school and dental school. A research unit is nearing completion. The whole is described by the Navy as "a citadel of the most advanced post-graduate instruction and diagnosis and treatment of the Army, Marine Corps and Coast Guard personnel."

**Occupies 350-Acre Tract**  
The center occupies a tract of 350 acres and its huge 210-foot white tower above the administration building can be seen for miles in daylight and also by aviators at night who are guided by its searchlight.

The main building housing the three principal units is built of structural steel and faced with precast-exposed aggregate concrete.

The chief executive has two other major addresses scheduled in the next seven days—on Thursday before the International Student Service which will be broadcast to the youth of the world, and the other next Monday, a Labor Day speech on new ways to check inflation.

Participating with the President in the broadcast will be four Naval doctors speaking from as many foreign stations—Capt. Lewis W. Johnson, senior naval medical officer in Iceland; Capt. Howard F. Lawrence, senior Naval medical officer in the Panama Canal Zone; and Capt. J. J. McMillin, commanding officer of the Naval hospital at Paris, France.

The new medical center is made up of a hospital, medical school and dental school. A research unit is nearing completion. The whole is described by the Navy as "a citadel of the most advanced post-graduate instruction and diagnosis and treatment of the Army, Marine Corps and Coast Guard personnel."

**Occupies 350-Acre Tract**  
The center occupies a tract of 350 acres and its huge 210-foot white tower above the administration building can be seen for miles in daylight and also by aviators at night who are guided by its searchlight.

The main building housing the three principal units is built of structural steel and faced with precast-exposed aggregate concrete.

The chief executive has two other major addresses scheduled in the next seven days—on Thursday before the International Student Service which will be broadcast to the youth of the world, and the other next Monday, a Labor Day speech on new ways to check inflation.

### Red Grange Kicks Off Once More

#### Harold E. Grange, the game's most famous figure, again will cover football for The Herald.

Harold E. Grange, the game's most famous figure, again will cover football for The Herald. Red Grange, former Gallopington College player, will be followed by articles on each week's college games.

Grange also will keep track of the professional football season. He has never lost touch with the college game.

If you want dope straight from the biggest name in football, follow Red Grange, writing exclusively for NEA Service and The Herald.

**Buried Under Coal**  
Rafaelo D'Allesandro, 55, of Port Chester, N. Y., was buried under a ton of coal in a bunker at the New Haven Railroad power plant in Cos Cob last night when the coal slid down, trapping him.

Francis E. Lawson, 20, of New Haven, was killed Saturday in Meriden when a truck he was driving overturned.

Louis P. Valley, 25, was fatally shot Saturday while operating an electric welding machine in a factory in Seymour.

**Boston Divorcee Stabbed to Death**  
Robert, 29-year-old divorcee, was stabbed to death in Franklin park last night when her male escort threw his dagger into the victim's back.

Meier Goldenberg, 37, her companion, was brought to police headquarters for questioning. He said that a shallow faced man held them up and stole \$30 from his wallet.

The assailant Goldenberg said, jumped into the back seat of the car and ordered him to drive ahead.

Goldenberg said that as he drove a short distance the man beat him with a bit of a revolver and slugged the girl.

**Gypsy Rose Lee Becomes Bride**  
Highland Mills, N. Y., Aug. 31.—Gypsy Rose Lee, who stripped her way from burlesque to legitimate stage fame and then won a million dollars in a raffle, was married today to actor Alexander Kirkland.

The bride is the former queen of the runway and after her mid-night marriage ceremony, performed by the Rev. J. Arthur Lazell, Episcopal minister, at her home here.

**Two Installed County Officers**  
Mrs. Harry F. Sweet of Putnam street, and Otto Heller of Ash-north street, were installed as officers of the County Association.

American Legion Posts and Auxiliaries, at a joint installation here in Odd Fellows hall, East Hartford, Saturday evening.

### 4 Lose Lives In Accidents

#### Only One Victim of Traffic Mishap During Week-End in State.

By The Associated Press  
Accidents took the lives of four men in Connecticut during the week-end.

Only one was a victim of a traffic mishap. One died of an injury suffered in a fall, another was suffocated in a coal mine, while the fourth was electrically shocked.

William E. Hampton, 56, died in Danbury hospital early today of a head injury suffered last night when he fell from a second-story window in his apartment in Danbury.

**Marine Gives Action Report**  
Boys on Guadalcanal Rough, Tough, 'Nasty As Well as Plenty Mad'

Washington, Aug. 31.—The Navy today released the following report of the Guadalcanal action, dated Aug. 14, from Sgt. James W. Hurst, of Arlington, Va., a Marine Corps combat correspondent.

This is no parade ground bunch of Marines on Guadalcanal. The boys are rough, tough, 'nasty' and they are plenty mad. They are as tough as iron and they are as mad as a hatter.

They are a lot of ammunition and a lot of ammo. They are a lot of ammo and a lot of ammo. They are a lot of ammo and a lot of ammo.

**Grange to Hold "Booster Night"**  
Manchester, Aug. 31.—H. W. Grange, who is the manager of the "Booster Night" program in connection with its regular meeting Wednesday evening at eight o'clock in the Manchester Y. M. C. A. building.

The program will begin about 7:30 p. m. and will include a musical program, a play, and a variety of other entertainment.

**ON THE RUN**  
NEW SYSTEM LAUNDRY  
34 Harrison Street—Off East Center Street Tel. 5733

**Witrose School Fashions**  
"At The Head Of The Class"

Every school girl gets off on the right foot when she shows up on the first day in Witrose good looking, casual clothes. They're over so smart!

**EVERYBODY EVERY PAYDAY 10%**

**WITROSE DRESS SHOP**  
597 Main Street Hotel Sheridan Building

### Invention Will Make Winter Flying Easier

#### Gadget Just Perfected Not Impressive-Looking For Bomber Pilot

By Sigrid Aroe  
Minnesota, Aug. 31.—(Wide World)—There's a little gadget which has just been perfected here that likely will make next winter flying easier for the boys who pilot American bombers.

It's an ice-indicator. It isn't impressive-looking. It weighs about five pounds and looks like a handful of telephone cord connecting two small black boxes, a dial and a plastic disc.

It tells when ice starts to form on the wings. It tells how thick the ice is. It can switch on a de-icer. In short, it means the bomber pilot has one less thing to worry about.

**Overnight News Of Connecticut**  
By Associated Press  
New Haven—Connecticut Council 16 of the American Federation of Labor, and a Municipal Employees (AFL) and a Municipal Employees (AFL) union.

**Women At War**  
SHIRLEY OSBORN, Aircraft Worker of San Diego, California, says:

**WOMEN AT WAR**  
SHIRLEY OSBORN, Aircraft Worker of San Diego, California, says:

**WEDDING AND FAREWELL PARTIES FOR SOLDIERS**  
A. PAGANI & SONS  
Tel. 5790

**TONIGHT**  
And Every Night—Through Labor Day

**K. of C. CARNIVAL**  
MAIN AND DELMONT ST.  
NIGHTLY GATE PRIZE \$25 WAR BOND

**TO THE SHORES OF TRIPOLI**  
PATHE-ORIANA-SCOTT  
PLUS "THIS TIME FOR KEEPS"

**Join The Fun!**  
BINGO NOVELTY BOOTHS THRILLING NEW RIDES  
(At The Same Old Price—10c.)  
**BIG NIGHTS**  
COME — AND BRING THE FAMILY!

### Defense Test Seen Success

#### State Guard and Civilian Agencies Foil Efforts Of Theoretical Enemy

Hartford, Aug. 31.—(AP)—Connecticut still was in the capable hands of the State Guard and civilian defense agencies today, its military installations and factories unscathed, despite mock attempts by a theoretical enemy to burn, bomb and sabotage the state out of the war effort.

When two days of war maneuvers—ordered by the Army throughout New England to test the mettle of the volunteer home forces—ended last night, Adj. Gen. Reginald B. DeLoach said that it was "exceptionally gratifying to review the excellent record which has been made."

**Week-End Deaths**  
Washington—Martin A. Broadfoot, 58, dean of the Washington Bureau of The Associated Press in point of Connecticut.

**Chicago—Dr. Stephen Walter**  
Rauson, 62, authority on the human nervous system and director of Northwestern University's Neurological Institute since 1927. He was born in Dodge Center, Minn.

**New York—Graham Romagn**  
Taylor, 62, editor and civic leader, who had been associated with the Commonwealth fund for the past 20 years. He was born in Hope-brook, N. Y.

**WOMEN AT WAR**  
SHIRLEY OSBORN, Aircraft Worker of San Diego, California, says:

**WOMEN AT WAR**  
SHIRLEY OSBORN, Aircraft Worker of San Diego, California, says:

**WEDDING AND FAREWELL PARTIES FOR SOLDIERS**  
A. PAGANI & SONS  
Tel. 5790

**TONIGHT**  
And Every Night—Through Labor Day

**K. of C. CARNIVAL**  
MAIN AND DELMONT ST.  
NIGHTLY GATE PRIZE \$25 WAR BOND

**TO THE SHORES OF TRIPOLI**  
PATHE-ORIANA-SCOTT  
PLUS "THIS TIME FOR KEEPS"

**Join The Fun!**  
BINGO NOVELTY BOOTHS THRILLING NEW RIDES  
(At The Same Old Price—10c.)  
**BIG NIGHTS**  
COME — AND BRING THE FAMILY!

**British War Relief BINGO**  
Tonight at 8 O'Clock ORANGE HALL  
Proceeds Now Divided Evenly Between British War Relief and the Various Service Funds of the Nation's Armed Forces.  
Admission ..... 25 Cents

**WILLIAM P. QUISH Funeral Home**  
There is no necessity for any family who calls on the Quish family to feel fearful of financial arrangements. Our monthly payment plan has proved a salvation to many in the stress of sudden loss.

**AMBULANCE SERVICE**  
225 MAIN ST. MANCHESTER Phone DAY-NIGHT 4340

# PIONEER PARACHUTE CO., Inc.

## And Employees

# URGE YOU TO BUY BONDS



During September — Payroll Savings Month. Salute To Our Heroes And To Labor

**EVERYBODY EVERY PAYDAY 10%**

**WITROSE School Fashions**  
"At The Head Of The Class"

**EVERYBODY EVERY PAYDAY 10%**

**WITROSE DRESS SHOP**  
597 Main Street Hotel Sheridan Building

**British War Relief BINGO**  
Tonight at 8 O'Clock ORANGE HALL  
Proceeds Now Divided Evenly Between British War Relief and the Various Service Funds of the Nation's Armed Forces.  
Admission ..... 25 Cents

**WILLIAM P. QUISH Funeral Home**  
There is no necessity for any family who calls on the Quish family to feel fearful of financial arrangements. Our monthly payment plan has proved a salvation to many in the stress of sudden loss.

**AMBULANCE SERVICE**  
225 MAIN ST. MANCHESTER Phone DAY-NIGHT 4340



Would Accept Second Place

William L. Hadden is "Available" for Republican State Ticket.

Manchester, Aug. 31.—Rep. William L. Hadden of Orange town made himself "available" for the Republican State Ticket.

K. C. Carnival Opens Tonight

To Be Held for Week On Main Street; All Sorts of Attractions.

All that is needed is continued good weather to make the opening of the carnival held this week by Campbell Council K. C. a success.

Heretofore Further Reduction of the 300 mill tax on the Illinois pipeline has not been completed by Jan. 1.

The increased production will be used for large and prizes of a high quality will be distributed to the winners.

Large tent has been erected that will be used for large and prizes of a high quality will be distributed to the winners.

Chinese 9 Miles From Nanchang

Chuan, which has been taken by the Chinese in the present offensive along with the smaller air bases at Lanhsi.

Manchester Date Book

Knights of Columbus Carnival opens. Main street will be closed for the carnival.

Chinese troops have taken nearly 200 miles of the railroad in their present offensive and have recovered most of the territory.

American Bombers Raid Myitkyina

American bombers raided the Japanese-occupied city of Myitkyina and its airbase in northern Burma yesterday.

Police Court

Charles R. Buzini of 65 Landon Drive was fined \$10 for speeding in the vicinity of the city.

Police Court

Charles R. Buzini of 65 Landon Drive was fined \$10 for speeding in the vicinity of the city.

Police Court

Charles R. Buzini of 65 Landon Drive was fined \$10 for speeding in the vicinity of the city.

Police Court

Charles R. Buzini of 65 Landon Drive was fined \$10 for speeding in the vicinity of the city.

Police Court

Charles R. Buzini of 65 Landon Drive was fined \$10 for speeding in the vicinity of the city.

Oil Drilling Authorized in Effort to Make More Petroleum Available for East

Washington, Aug. 31.—An effort to make more petroleum available to the east, the War Production Board today authorized increased drilling of oil wells in Illinois, southwestern Indiana, and northwestern Kentucky.

Acting on a recommendation by the Office of Petroleum Administration, the WPA temporarily relaxed Federal well spacing regulations. Until next Jan. 1, the order allows the drilling of wells in sand beds and sand reservoirs in mixed fields in Illinois, southwestern Indiana, and northwestern Kentucky.

These spacings compare with the general regulation of not more than one well to every 40 surface acres.

Heretofore Further Reduction of the 300 mill tax on the Illinois pipeline has not been completed by Jan. 1.

The increased production will be used for large and prizes of a high quality will be distributed to the winners.

Large tent has been erected that will be used for large and prizes of a high quality will be distributed to the winners.

Chinese 9 Miles From Nanchang

Chuan, which has been taken by the Chinese in the present offensive along with the smaller air bases at Lanhsi.

Manchester Date Book

Knights of Columbus Carnival opens. Main street will be closed for the carnival.

Chinese troops have taken nearly 200 miles of the railroad in their present offensive and have recovered most of the territory.

American Bombers Raid Myitkyina

American bombers raided the Japanese-occupied city of Myitkyina and its airbase in northern Burma yesterday.

Police Court

Charles R. Buzini of 65 Landon Drive was fined \$10 for speeding in the vicinity of the city.

Police Court

Charles R. Buzini of 65 Landon Drive was fined \$10 for speeding in the vicinity of the city.

Police Court

Charles R. Buzini of 65 Landon Drive was fined \$10 for speeding in the vicinity of the city.

Police Court

Charles R. Buzini of 65 Landon Drive was fined \$10 for speeding in the vicinity of the city.

Police Court

Charles R. Buzini of 65 Landon Drive was fined \$10 for speeding in the vicinity of the city.

Police Court

Charles R. Buzini of 65 Landon Drive was fined \$10 for speeding in the vicinity of the city.

WAVES Need to Have Good Head and Feet

By Ruth Cowan. Northampton, Mass., Aug. 31.—From march to breakfast, WAVES need to have good head and feet.

It doesn't matter if you get seasick, you aren't going on a ship. WAVES need to have good head and feet.

These spacings compare with the general regulation of not more than one well to every 40 surface acres.

Heretofore Further Reduction of the 300 mill tax on the Illinois pipeline has not been completed by Jan. 1.

The increased production will be used for large and prizes of a high quality will be distributed to the winners.

Large tent has been erected that will be used for large and prizes of a high quality will be distributed to the winners.

Chinese 9 Miles From Nanchang

Chuan, which has been taken by the Chinese in the present offensive along with the smaller air bases at Lanhsi.

Manchester Date Book

Knights of Columbus Carnival opens. Main street will be closed for the carnival.

Chinese troops have taken nearly 200 miles of the railroad in their present offensive and have recovered most of the territory.

American Bombers Raid Myitkyina

American bombers raided the Japanese-occupied city of Myitkyina and its airbase in northern Burma yesterday.

Police Court

Charles R. Buzini of 65 Landon Drive was fined \$10 for speeding in the vicinity of the city.

Police Court

Charles R. Buzini of 65 Landon Drive was fined \$10 for speeding in the vicinity of the city.

Police Court

Charles R. Buzini of 65 Landon Drive was fined \$10 for speeding in the vicinity of the city.

Police Court

Charles R. Buzini of 65 Landon Drive was fined \$10 for speeding in the vicinity of the city.

Police Court

Charles R. Buzini of 65 Landon Drive was fined \$10 for speeding in the vicinity of the city.

Police Court

Charles R. Buzini of 65 Landon Drive was fined \$10 for speeding in the vicinity of the city.

Band Concert Well Attended

The first in a series of Sunday band concerts to be given by the Regimental Band located here, was well attended in the Center Park yesterday afternoon.

The band was composed of 28 pieces. They were seated on the north side of the Center Park yesterday afternoon.

These spacings compare with the general regulation of not more than one well to every 40 surface acres.

Heretofore Further Reduction of the 300 mill tax on the Illinois pipeline has not been completed by Jan. 1.

The increased production will be used for large and prizes of a high quality will be distributed to the winners.

Large tent has been erected that will be used for large and prizes of a high quality will be distributed to the winners.

Chinese 9 Miles From Nanchang

Chuan, which has been taken by the Chinese in the present offensive along with the smaller air bases at Lanhsi.

Manchester Date Book

Knights of Columbus Carnival opens. Main street will be closed for the carnival.

Chinese troops have taken nearly 200 miles of the railroad in their present offensive and have recovered most of the territory.

American Bombers Raid Myitkyina

American bombers raided the Japanese-occupied city of Myitkyina and its airbase in northern Burma yesterday.

Police Court

Charles R. Buzini of 65 Landon Drive was fined \$10 for speeding in the vicinity of the city.

Police Court

Charles R. Buzini of 65 Landon Drive was fined \$10 for speeding in the vicinity of the city.

Police Court

Charles R. Buzini of 65 Landon Drive was fined \$10 for speeding in the vicinity of the city.

Police Court

Charles R. Buzini of 65 Landon Drive was fined \$10 for speeding in the vicinity of the city.

Police Court

Charles R. Buzini of 65 Landon Drive was fined \$10 for speeding in the vicinity of the city.

Police Court

Charles R. Buzini of 65 Landon Drive was fined \$10 for speeding in the vicinity of the city.

New Sections To Get Mail

Service to Start Tomorrow in Four Areas in the Town.

Mail service for four new sections of Manchester will start tomorrow morning at 8:30, according to Postmaster Thomas J. Squibb.

These spacings compare with the general regulation of not more than one well to every 40 surface acres.

Heretofore Further Reduction of the 300 mill tax on the Illinois pipeline has not been completed by Jan. 1.

The increased production will be used for large and prizes of a high quality will be distributed to the winners.

Large tent has been erected that will be used for large and prizes of a high quality will be distributed to the winners.

Chinese 9 Miles From Nanchang

Chuan, which has been taken by the Chinese in the present offensive along with the smaller air bases at Lanhsi.

Manchester Date Book

Knights of Columbus Carnival opens. Main street will be closed for the carnival.

Chinese troops have taken nearly 200 miles of the railroad in their present offensive and have recovered most of the territory.

American Bombers Raid Myitkyina

American bombers raided the Japanese-occupied city of Myitkyina and its airbase in northern Burma yesterday.

Police Court

Charles R. Buzini of 65 Landon Drive was fined \$10 for speeding in the vicinity of the city.

Police Court

Charles R. Buzini of 65 Landon Drive was fined \$10 for speeding in the vicinity of the city.

Police Court

Charles R. Buzini of 65 Landon Drive was fined \$10 for speeding in the vicinity of the city.

Police Court

Charles R. Buzini of 65 Landon Drive was fined \$10 for speeding in the vicinity of the city.

Police Court

Charles R. Buzini of 65 Landon Drive was fined \$10 for speeding in the vicinity of the city.

Police Court

Charles R. Buzini of 65 Landon Drive was fined \$10 for speeding in the vicinity of the city.

50,000 Nazi Patents Stakes in Big Battle

Many Filled in Names of Americans, Neutrals or Camouflaged Otherwise by Germans.

can patent frankly as Germans or German companies. Some of the methods used this time were outlined to the U. S. Senate Committee on patents by a German agent.

These spacings compare with the general regulation of not more than one well to every 40 surface acres.

Heretofore Further Reduction of the 300 mill tax on the Illinois pipeline has not been completed by Jan. 1.

The increased production will be used for large and prizes of a high quality will be distributed to the winners.

Large tent has been erected that will be used for large and prizes of a high quality will be distributed to the winners.

Chinese 9 Miles From Nanchang

Chuan, which has been taken by the Chinese in the present offensive along with the smaller air bases at Lanhsi.

Manchester Date Book

Knights of Columbus Carnival opens. Main street will be closed for the carnival.

Chinese troops have taken nearly 200 miles of the railroad in their present offensive and have recovered most of the territory.

American Bombers Raid Myitkyina

American bombers raided the Japanese-occupied city of Myitkyina and its airbase in northern Burma yesterday.

Police Court

Charles R. Buzini of 65 Landon Drive was fined \$10 for speeding in the vicinity of the city.

Police Court

Charles R. Buzini of 65 Landon Drive was fined \$10 for speeding in the vicinity of the city.

Police Court

Charles R. Buzini of 65 Landon Drive was fined \$10 for speeding in the vicinity of the city.

Police Court

Charles R. Buzini of 65 Landon Drive was fined \$10 for speeding in the vicinity of the city.

Police Court

Charles R. Buzini of 65 Landon Drive was fined \$10 for speeding in the vicinity of the city.

Police Court

Charles R. Buzini of 65 Landon Drive was fined \$10 for speeding in the vicinity of the city.

Real Wild Men Watch Planes

Cannibals See Fliers And Marines, Admirals And Generals.

A Pacific Airfield, Aug. 31.—The greatest show on earth is being staged far from the mad-dog denning in reverse from old circus methods but with infinitely more dramatic realism.

These spacings compare with the general regulation of not more than one well to every 40 surface acres.

Heretofore Further Reduction of the 300 mill tax on the Illinois pipeline has not been completed by Jan. 1.

The increased production will be used for large and prizes of a high quality will be distributed to the winners.

Large tent has been erected that will be used for large and prizes of a high quality will be distributed to the winners.

Chinese 9 Miles From Nanchang

Chuan, which has been taken by the Chinese in the present offensive along with the smaller air bases at Lanhsi.

Manchester Date Book

Knights of Columbus Carnival opens. Main street will be closed for the carnival.

Chinese troops have taken nearly 200 miles of the railroad in their present offensive and have recovered most of the territory.

American Bombers Raid Myitkyina

American bombers raided the Japanese-occupied city of Myitkyina and its airbase in northern Burma yesterday.

Police Court

Charles R. Buzini of 65 Landon Drive was fined \$10 for speeding in the vicinity of the city.

Police Court

Charles R. Buzini of 65 Landon Drive was fined \$10 for speeding in the vicinity of the city.

Police Court

Charles R. Buzini of 65 Landon Drive was fined \$10 for speeding in the vicinity of the city.

Police Court

Charles R. Buzini of 65 Landon Drive was fined \$10 for speeding in the vicinity of the city.

Police Court

Charles R. Buzini of 65 Landon Drive was fined \$10 for speeding in the vicinity of the city.

Police Court

Charles R. Buzini of 65 Landon Drive was fined \$10 for speeding in the vicinity of the city.

G. E. Willis & Son, Inc. And Employees URGES YOU TO BUY COALS

Do you need CASH? When a loan is necessary, you will get immediate service at home.

Personal Finance Co. State Theater Building, 2nd Floor, Phone 3450.

We're In This War With The Will To Win

This is disgraceful object (we use Mrs. Jones' own words) was a good chair once. Later it has been hidden in the attic and giving Mrs. Jones a guilty feeling every time she thought of it.

During September Payroll Savings Month, Salute To Our Heroes And To Labor.

MacDonald Upholstery Co. 583 MAIN ST., HARTFORD, CONN. PHONE 5-4127

Living Room Set Reupholstered In Homespun

Our Fighting Forces Must Have Ships, Planes, Tanks, Ammunition And Many Other Things—Bonds Buy Them.

MacDonald Upholstery Co. 583 MAIN ST., HARTFORD, CONN. PHONE 5-4127

Living Room Set Reupholstered In Homespun

Our Fighting Forces Must Have Ships, Planes, Tanks, Ammunition And Many Other Things—Bonds Buy Them.

MacDonald Upholstery Co. 583 MAIN ST., HARTFORD, CONN. PHONE 5-4127

Living Room Set Reupholstered In Homespun



Manchester Evening Herald

PUBLISHED BY THE HERALD PRINTING CO., INC. 15 BROADWAY, MANCHESTER, CONN. Telephone 2-1111

MEMBER OF THE ASSOCIATED PRESS. The Associated Press is a corporation organized under the laws of the United States.

MEMBER ADVERTISING BUREAU OF CIRCULATION. The circulation of this newspaper is approximately 100,000 copies daily.

Monday, August 31

Grew's Warning

Occasionally, an American hero has come back from the fighting front, and confessed himself amazed at the way the people back home do not seem thoroughly aware of the fact that this nation is engaged in a life and death struggle.

Manhattan

New York—Lanny Ross is the sort of a night hawk who has his own broadcast, then, when he's out of the air, faces the audience and says "Come on, gang, now we're going to have a little fun."

A Victory Explodes

There has been some visible improvement in American news of the war since Elmer Davis took over, but something slipped a rather abominable cog on last week's supposed battle around the Solomon Islands.

A Thought

They went in a lunge into my feet, and a light came upon my face. —Palma 119:105

Only A Test?

On Manchester's most recent air raid test, the city was hit, when Manchester was missed, everybody suddenly had nothing to do but watch everybody else.

Cause For Worry

It has been estimated that 20,000,000 tons of steel will be used in the construction of the new aircraft carrier, the USS Yorktown.

More Push Needed on the Home Front

one of the most important battles of the whole Pacific war. Then, on Thursday, the Navy abruptly announced that the enemy fleet had withdrawn. And that seemed like a certain American victory of major proportions.

Charter Oak Commutation

Mr. William Lacey's comments in this paper Saturday, in criticism of the "reduced rate" commutation ticket plan announced by the Hartford Bridge Commission.

Health and Diet Advice

Furnished by the McCoy Health Service. Address communications to The Health Service.

Washington In Wartime

By Jack Shaver. (For Jack Shaver, on Vacation) Washington—Chances are you haven't heard that serial about the school type of girl.

Coventry House Bedrooms

Coventry House Bedrooms No. 1. Suite, 3 pieces: 4-drawer Heppelwhite chest and mirror, 8-drawer flat top Queen Anne highboy, short-post bed.

Coventry House Bedroom No. 2

Suite, 3 Pieces: Swell front Heppelwhite dresser base and mirror, matching chest of drawers, full size and low-post bed.

The Cottage Living Room

The Cottage Living Room. Lamp Table, Sheraton, with shelf and drawer. Genuine mahogany.

The Cottage Living-Dining Room

The Cottage Living-Dining Room. Love Seat, Low wing model in yellow, rose and green cretonne; pleated ruffle.

The Cottage Kitchen

The Cottage Kitchen. Sink Cabinet, 66-inch Hoosier sink cabinet in white with blue linoleum top.

1942 Army Is Better Than Troops in 1917

Has More Education And Training: Physical Condition Superior To First AEF. By Russell Landstrom. With the United States Forces in Europe Aug. 31—Wide World.

Manhattan

New York—Lanny Ross is the sort of a night hawk who has his own broadcast, then, when he's out of the air, faces the audience and says "Come on, gang, now we're going to have a little fun."

Health and Diet Advice

Furnished by the McCoy Health Service. Address communications to The Health Service.

Washington In Wartime

By Jack Shaver. (For Jack Shaver, on Vacation) Washington—Chances are you haven't heard that serial about the school type of girl.

Coventry House Bedrooms

Coventry House Bedrooms No. 1. Suite, 3 pieces: 4-drawer Heppelwhite chest and mirror, 8-drawer flat top Queen Anne highboy, short-post bed.

Coventry House Bedroom No. 2

Suite, 3 Pieces: Swell front Heppelwhite dresser base and mirror, matching chest of drawers, full size and low-post bed.

The Cottage Living Room

The Cottage Living Room. Lamp Table, Sheraton, with shelf and drawer. Genuine mahogany.

The Cottage Living-Dining Room

The Cottage Living-Dining Room. Love Seat, Low wing model in yellow, rose and green cretonne; pleated ruffle.

The Cottage Kitchen

The Cottage Kitchen. Sink Cabinet, 66-inch Hoosier sink cabinet in white with blue linoleum top.

1942 Army Is Better Than Troops in 1917

Has More Education And Training: Physical Condition Superior To First AEF. By Russell Landstrom. With the United States Forces in Europe Aug. 31—Wide World.

Manhattan

New York—Lanny Ross is the sort of a night hawk who has his own broadcast, then, when he's out of the air, faces the audience and says "Come on, gang, now we're going to have a little fun."

Health and Diet Advice

Furnished by the McCoy Health Service. Address communications to The Health Service.

Washington In Wartime

By Jack Shaver. (For Jack Shaver, on Vacation) Washington—Chances are you haven't heard that serial about the school type of girl.

Coventry House Bedrooms

Coventry House Bedrooms No. 1. Suite, 3 pieces: 4-drawer Heppelwhite chest and mirror, 8-drawer flat top Queen Anne highboy, short-post bed.

Coventry House Bedroom No. 2

Suite, 3 Pieces: Swell front Heppelwhite dresser base and mirror, matching chest of drawers, full size and low-post bed.

The Cottage Living Room

The Cottage Living Room. Lamp Table, Sheraton, with shelf and drawer. Genuine mahogany.

The Cottage Living-Dining Room

The Cottage Living-Dining Room. Love Seat, Low wing model in yellow, rose and green cretonne; pleated ruffle.

The Cottage Kitchen

The Cottage Kitchen. Sink Cabinet, 66-inch Hoosier sink cabinet in white with blue linoleum top.

1942 Army Is Better Than Troops in 1917

Has More Education And Training: Physical Condition Superior To First AEF. By Russell Landstrom. With the United States Forces in Europe Aug. 31—Wide World.

Manhattan

New York—Lanny Ross is the sort of a night hawk who has his own broadcast, then, when he's out of the air, faces the audience and says "Come on, gang, now we're going to have a little fun."

Health and Diet Advice

Furnished by the McCoy Health Service. Address communications to The Health Service.

Washington In Wartime

By Jack Shaver. (For Jack Shaver, on Vacation) Washington—Chances are you haven't heard that serial about the school type of girl.

Coventry House Bedrooms

Coventry House Bedrooms No. 1. Suite, 3 pieces: 4-drawer Heppelwhite chest and mirror, 8-drawer flat top Queen Anne highboy, short-post bed.

Coventry House Bedroom No. 2

Suite, 3 Pieces: Swell front Heppelwhite dresser base and mirror, matching chest of drawers, full size and low-post bed.

The Cottage Living Room

The Cottage Living Room. Lamp Table, Sheraton, with shelf and drawer. Genuine mahogany.

The Cottage Living-Dining Room

The Cottage Living-Dining Room. Love Seat, Low wing model in yellow, rose and green cretonne; pleated ruffle.

The Cottage Kitchen

The Cottage Kitchen. Sink Cabinet, 66-inch Hoosier sink cabinet in white with blue linoleum top.

1942 Army Is Better Than Troops in 1917

Has More Education And Training: Physical Condition Superior To First AEF. By Russell Landstrom. With the United States Forces in Europe Aug. 31—Wide World.

Manhattan

New York—Lanny Ross is the sort of a night hawk who has his own broadcast, then, when he's out of the air, faces the audience and says "Come on, gang, now we're going to have a little fun."

Health and Diet Advice

Furnished by the McCoy Health Service. Address communications to The Health Service.

Washington In Wartime

By Jack Shaver. (For Jack Shaver, on Vacation) Washington—Chances are you haven't heard that serial about the school type of girl.

Coventry House Bedrooms

Coventry House Bedrooms No. 1. Suite, 3 pieces: 4-drawer Heppelwhite chest and mirror, 8-drawer flat top Queen Anne highboy, short-post bed.

Coventry House Bedroom No. 2

Suite, 3 Pieces: Swell front Heppelwhite dresser base and mirror, matching chest of drawers, full size and low-post bed.

The Cottage Living Room

The Cottage Living Room. Lamp Table, Sheraton, with shelf and drawer. Genuine mahogany.

The Cottage Living-Dining Room

The Cottage Living-Dining Room. Love Seat, Low wing model in yellow, rose and green cretonne; pleated ruffle.

The Cottage Kitchen

The Cottage Kitchen. Sink Cabinet, 66-inch Hoosier sink cabinet in white with blue linoleum top.

1942 Army Is Better Than Troops in 1917

Has More Education And Training: Physical Condition Superior To First AEF. By Russell Landstrom. With the United States Forces in Europe Aug. 31—Wide World.

Manhattan

New York—Lanny Ross is the sort of a night hawk who has his own broadcast, then, when he's out of the air, faces the audience and says "Come on, gang, now we're going to have a little fun."

Health and Diet Advice

Furnished by the McCoy Health Service. Address communications to The Health Service.

Washington In Wartime

By Jack Shaver. (For Jack Shaver, on Vacation) Washington—Chances are you haven't heard that serial about the school type of girl.

Coventry House Bedrooms

Coventry House Bedrooms No. 1. Suite, 3 pieces: 4-drawer Heppelwhite chest and mirror, 8-drawer flat top Queen Anne highboy, short-post bed.

Coventry House Bedroom No. 2

Suite, 3 Pieces: Swell front Heppelwhite dresser base and mirror, matching chest of drawers, full size and low-post bed.

The Cottage Living Room

The Cottage Living Room. Lamp Table, Sheraton, with shelf and drawer. Genuine mahogany.

The Cottage Living-Dining Room

The Cottage Living-Dining Room. Love Seat, Low wing model in yellow, rose and green cretonne; pleated ruffle.

The Cottage Kitchen

The Cottage Kitchen. Sink Cabinet, 66-inch Hoosier sink cabinet in white with blue linoleum top.

1942 Army Is Better Than Troops in 1917

Has More Education And Training: Physical Condition Superior To First AEF. By Russell Landstrom. With the United States Forces in Europe Aug. 31—Wide World.

Manhattan

New York—Lanny Ross is the sort of a night hawk who has his own broadcast, then, when he's out of the air, faces the audience and says "Come on, gang, now we're going to have a little fun."

Health and Diet Advice

Furnished by the McCoy Health Service. Address communications to The Health Service.

Washington In Wartime

By Jack Shaver. (For Jack Shaver, on Vacation) Washington—Chances are you haven't heard that serial about the school type of girl.

Coventry House Bedrooms

Coventry House Bedrooms No. 1. Suite, 3 pieces: 4-drawer Heppelwhite chest and mirror, 8-drawer flat top Queen Anne highboy, short-post bed.

Coventry House Bedroom No. 2

Suite, 3 Pieces: Swell front Heppelwhite dresser base and mirror, matching chest of drawers, full size and low-post bed.

The Cottage Living Room

The Cottage Living Room. Lamp Table, Sheraton, with shelf and drawer. Genuine mahogany.

The Cottage Living-Dining Room

The Cottage Living-Dining Room. Love Seat, Low wing model in yellow, rose and green cretonne; pleated ruffle.

The Cottage Kitchen

The Cottage Kitchen. Sink Cabinet, 66-inch Hoosier sink cabinet in white with blue linoleum top.

1942 Army Is Better Than Troops in 1917

Has More Education And Training: Physical Condition Superior To First AEF. By Russell Landstrom. With the United States Forces in Europe Aug. 31—Wide World.

Manhattan

New York—Lanny Ross is the sort of a night hawk who has his own broadcast, then, when he's out of the air, faces the audience and says "Come on, gang, now we're going to have a little fun."

Health and Diet Advice

Furnished by the McCoy Health Service. Address communications to The Health Service.

Washington In Wartime

By Jack Shaver. (For Jack Shaver, on Vacation) Washington—Chances are you haven't heard that serial about the school type of girl.

Coventry House Bedrooms

Coventry House Bedrooms No. 1. Suite, 3 pieces: 4-drawer Heppelwhite chest and mirror, 8-drawer flat top Queen Anne highboy, short-post bed.

Coventry House Bedroom No. 2

Suite, 3 Pieces: Swell front Heppelwhite dresser base and mirror, matching chest of drawers, full size and low-post bed.

The Cottage Living Room

The Cottage Living Room. Lamp Table, Sheraton, with shelf and drawer. Genuine mahogany.

The Cottage Living-Dining Room

The Cottage Living-Dining Room. Love Seat, Low wing model in yellow, rose and green cretonne; pleated ruffle.

The Cottage Kitchen

The Cottage Kitchen. Sink Cabinet, 66-inch Hoosier sink cabinet in white with blue linoleum top.

1942 Army Is Better Than Troops in 1917

Has More Education And Training: Physical Condition Superior To First AEF. By Russell Landstrom. With the United States Forces in Europe Aug. 31—Wide World.

Manhattan

New York—Lanny Ross is the sort of a night hawk who has his own broadcast, then, when he's out of the air, faces the audience and says "Come on, gang, now we're going to have a little fun."

Health and Diet Advice

Furnished by the McCoy Health Service. Address communications to The Health Service.

Washington In Wartime

By Jack Shaver. (For Jack Shaver, on Vacation) Washington—Chances are you haven't heard that serial about the school type of girl.

Coventry House Bedrooms

Coventry House Bedrooms No. 1. Suite, 3 pieces: 4-drawer Heppelwhite chest and mirror, 8-drawer flat top Queen Anne highboy, short-post bed.

Coventry House Bedroom No. 2

Suite, 3 Pieces: Swell front Heppelwhite dresser base and mirror, matching chest of drawers, full size and low-post bed.

The Cottage Living Room

The Cottage Living Room. Lamp Table, Sheraton, with shelf and drawer. Genuine mahogany.

The Cottage Living-Dining Room

The Cottage Living-Dining Room. Love Seat, Low wing model in yellow, rose and green cretonne; pleated ruffle.

The Cottage Kitchen

The Cottage Kitchen. Sink Cabinet, 66-inch Hoosier sink cabinet in white with blue linoleum top.

1942 Army Is Better Than Troops in 1917

Has More Education And Training: Physical Condition Superior To First AEF. By Russell Landstrom. With the United States Forces in Europe Aug. 31—Wide World.

Manhattan

New York—Lanny Ross is the sort of a night hawk who has his own broadcast, then, when he's out of the air, faces the audience and says "Come on, gang, now we're going to have a little fun."

Health and Diet Advice

Furnished by the McCoy Health Service. Address communications to The Health Service.

Washington In Wartime

By Jack Shaver. (For Jack Shaver, on Vacation) Washington—Chances are you haven't heard that serial about the school type of girl.

Coventry House Bedrooms

Coventry House Bedrooms No. 1. Suite, 3 pieces: 4-drawer Heppelwhite chest and mirror, 8-drawer flat top Queen Anne highboy, short-post bed.

Coventry House Bedroom No. 2

Suite, 3 Pieces: Swell front Heppelwhite dresser base and mirror, matching chest of drawers, full size and low-post bed.

The Cottage Living Room

The Cottage Living Room. Lamp Table, Sheraton, with shelf and drawer. Genuine mahogany.

The Cottage Living-Dining Room

The Cottage Living-Dining Room. Love Seat, Low wing model in yellow, rose and green cretonne; pleated ruffle.

The Cottage Kitchen

The Cottage Kitchen. Sink Cabinet, 66-inch Hoosier sink cabinet in white with blue linoleum top.

1942 Army Is Better Than Troops in 1917

Has More Education And Training: Physical Condition Superior To First AEF. By Russell Landstrom. With the United States Forces in Europe Aug. 31—Wide World.

Manhattan

New York—Lanny Ross is the sort of a night hawk who has his own broadcast, then, when he's out of the air, faces the audience and says "Come on, gang, now we're going to have a little fun."

Health and Diet Advice

Furnished by the McCoy Health Service. Address communications to The Health Service.

Washington In Wartime

By Jack Shaver. (For Jack Shaver, on Vacation) Washington—Chances are you haven't heard that serial about the school type of girl.

Coventry House Bedrooms

Coventry House Bedrooms No. 1. Suite, 3 pieces: 4-drawer Heppelwhite chest and mirror, 8-drawer flat top Queen Anne highboy, short-post bed.

Coventry House Bedroom No. 2

Suite, 3 Pieces: Swell front Heppelwhite dresser base and mirror, matching chest of drawers, full size and low-post bed.

The Cottage Living Room

The Cottage Living Room. Lamp Table, Sheraton, with shelf and drawer. Genuine mahogany.

The Cottage Living-Dining Room

The Cottage Living-Dining Room. Love Seat, Low wing model in yellow, rose and green cretonne; pleated ruffle.

The Cottage Kitchen

The Cottage Kitchen. Sink Cabinet, 66-inch Hoosier sink cabinet in white with blue linoleum top.

1942 Army Is Better Than Troops in 1917

Has More Education And Training: Physical Condition Superior To First AEF. By Russell Landstrom. With the United States Forces in Europe Aug. 31—Wide World.

Manhattan

New York—Lanny Ross is the sort of a night hawk who has his own broadcast, then, when he's out of the air, faces the audience and says "Come on, gang, now we're going to have a little fun."

Health and Diet Advice

Furnished by the McCoy Health Service. Address communications to The Health Service.

Washington In Wartime

By Jack Shaver. (For Jack Shaver, on Vacation) Washington—Chances are you haven't heard that serial about the school type of girl.

Coventry House Bedrooms

Coventry House Bedrooms No. 1. Suite, 3 pieces: 4-drawer Heppelwhite chest and mirror, 8-drawer flat top Queen Anne highboy, short-post bed.

Coventry House Bedroom No. 2

Suite, 3 Pieces: Swell front Heppelwhite dresser base and mirror, matching chest of drawers, full size and low-post bed.

The Cottage Living Room

The Cottage Living Room. Lamp Table, Sheraton, with shelf and drawer. Genuine mahogany.

The Cottage Living-Dining Room

The Cottage Living-Dining Room. Love Seat, Low wing model in yellow, rose and green cretonne; pleated ruffle.

The Cottage Kitchen

The Cottage Kitchen. Sink Cabinet, 66-inch Hoosier sink cabinet in white with blue linoleum top.

1942 Army Is Better Than Troops in 1917



British Smash Big Axis Base Near El Daba

The shelling of the El Daba concentration, one of the most important bases for repair and equipping of Rommel's tanks and an advanced supply center for the German army, exceeded expectations. The attack was planned with photographs supplied by aerial reconnaissance camera crews. Naval planes dropped bombs over the base...

Swift British Raid Upon Small Island Tacitly Admitted

A British raid upon a small island in the Mediterranean, which was tacitly admitted by the British command, was reported to have been successful. The raid was carried out by a small force of commandos...

House Rates Are Retained

The House of Representatives today rejected a proposal for a 10 percent increase in the tax on individual spending. The measure was defeated by a vote of 227 to 200...

Launched Attack With Stukas

From the air, the Germans launched an attack with more than 20 Stukas, one of the fastest and most intensive ever launched against the island. The attack was carried out by a force of 20 Stukas...

Shell Cases Litter Decks

Heavier and heavier artillery came in succession. Thousands of empty shell cases littered the decks. The attack was carried out by a force of 20 Stukas...

Shore Batteries Open Fire

German aircraft were then opened fire. Simultaneously, more Stukas roared overhead. Near misses rocked the vessel. The attack was carried out by a force of 20 Stukas...

Charge Illegal Use of Gasoline

Hartford, Aug. 31.—Norman J. Steinberg, an attorney, and Norman I. Rubin, a chemist, were arrested today for charging illegal use of gasoline in connection with a boy's camp. The charge was made by the state attorney...

Quotations

We have never had a war when it was necessary to draft boys 18 and 19 and expect we'll have to take them in this one. —Maj. Gen. Lewis B. Hershey, chief of the Selective Training and Service Administration...

Personal Notices

Card of Thanks: We wish to thank our friends and neighbors for their kind sympathy and beautiful floral tributes on the death of our mother and grandmother, Mrs. Elizabeth C. O'Brien, who passed away on August 28, 1942...

Smash Japanese In Milne Bay Area

From destruction by evacuation of Japanese warships at night, their losses have been heavy. All of their heavy supplies, including tanks, were abandoned on the beach. The attack was carried out by a force of 20 Stukas...

State Guards Given Praise

Hartford, Aug. 31.—Civilian members of the Connecticut State Guard were praised today for their participation in the traditional rivalry against Army troops. The State Guard was organized in 1916...

War Emergency Radio Now in Preparation

New York, Aug. 31.—(Wide World)—As another step in the establishment of a national radio system in various municipalities, the Federal Communications Commission has begun issuing licenses with the classification of "War Emergency Radio" service. The first one was to Akron, Ohio...

Nurses' Aides In Exercises

Classes Three and Four To Be Graduated at the Center Church. Communications for publications in the Open Forum will not be guaranteed publication if they contain more than 300 words. The Herald reserves the right to decline to publish any material that may be libelous or which is in violation of the laws of the state...

Italians Report Eight British Planes Downed

Rome, (From Italian Broadcast), Aug. 31.—The Italian press reported today that eight British planes were shot down over the Mediterranean during an attack against Axis merchant ships. One ship was damaged and another was sunk...

Malta Defenses Destroy 13 Axis Planes

Valletta, Malta, Aug. 31.—(AP)—The Italian press reported today that 13 Axis planes were destroyed during 24-hour raids on Malta today. Nine were bombers. The British radio said 807 enemy planes had been destroyed over Malta and there had been nearly 5,000 airmen killed there during the war...

Judge McLaughlin Holds First Court

Hartford, Aug. 31.—(AP)—Superior Court Judge Charles J. McLaughlin held his first court today for the first time since he was appointed to the bench by Governor Hurley. Judge McLaughlin, who is a resident of West Hartford, was appointed to succeed Judge Carl P. Foster, who retired last week. The court will hold its first session on September 1st...

Dog The Cause Of Hit

Berlin, Conn., Aug. 31.—(AP)—A dog darted across the highway on a pipe, according to many witnesses. Her son abhorred the dog and was killed in an accident. The dog was found to be the cause of the accident. The dog was shot and killed by the police...

Air Attack Batters Jap Base in the Solomons

Smoke rises from Tananogho Island in the Solomons after an attack on the Japanese-held base by U. S. carrier-based air forces. Japanese gun emplacements and aircraft batteries were hit. The attack was carried out by a force of 20 Stukas...

Smash Japanese In Milne Bay Area

From destruction by evacuation of Japanese warships at night, their losses have been heavy. All of their heavy supplies, including tanks, were abandoned on the beach. The attack was carried out by a force of 20 Stukas...

The Open Forum

Communications for publications in the Open Forum will not be guaranteed publication if they contain more than 300 words. The Herald reserves the right to decline to publish any material that may be libelous or which is in violation of the laws of the state...

About Town

Mr. and Mrs. Wesley Shortz, Jr., of 27 Latic street are spending the week at Point Wood. The regular meeting of the Manchester Family Party will be held at the Memorial Hospital tomorrow evening at 7:30. It is important that every one attend this meeting...

Smash Japanese In Milne Bay Area

From destruction by evacuation of Japanese warships at night, their losses have been heavy. All of their heavy supplies, including tanks, were abandoned on the beach. The attack was carried out by a force of 20 Stukas...

Smash Japanese In Milne Bay Area

From destruction by evacuation of Japanese warships at night, their losses have been heavy. All of their heavy supplies, including tanks, were abandoned on the beach. The attack was carried out by a force of 20 Stukas...

Smash Japanese In Milne Bay Area

From destruction by evacuation of Japanese warships at night, their losses have been heavy. All of their heavy supplies, including tanks, were abandoned on the beach. The attack was carried out by a force of 20 Stukas...

Smash Japanese In Milne Bay Area

From destruction by evacuation of Japanese warships at night, their losses have been heavy. All of their heavy supplies, including tanks, were abandoned on the beach. The attack was carried out by a force of 20 Stukas...

Smash Japanese In Milne Bay Area

From destruction by evacuation of Japanese warships at night, their losses have been heavy. All of their heavy supplies, including tanks, were abandoned on the beach. The attack was carried out by a force of 20 Stukas...

Smash Japanese In Milne Bay Area

From destruction by evacuation of Japanese warships at night, their losses have been heavy. All of their heavy supplies, including tanks, were abandoned on the beach. The attack was carried out by a force of 20 Stukas...

Smash Japanese In Milne Bay Area

From destruction by evacuation of Japanese warships at night, their losses have been heavy. All of their heavy supplies, including tanks, were abandoned on the beach. The attack was carried out by a force of 20 Stukas...

Smash Japanese In Milne Bay Area

From destruction by evacuation of Japanese warships at night, their losses have been heavy. All of their heavy supplies, including tanks, were abandoned on the beach. The attack was carried out by a force of 20 Stukas...

Smash Japanese In Milne Bay Area

From destruction by evacuation of Japanese warships at night, their losses have been heavy. All of their heavy supplies, including tanks, were abandoned on the beach. The attack was carried out by a force of 20 Stukas...

Smash Japanese In Milne Bay Area

From destruction by evacuation of Japanese warships at night, their losses have been heavy. All of their heavy supplies, including tanks, were abandoned on the beach. The attack was carried out by a force of 20 Stukas...

Smash Japanese In Milne Bay Area

From destruction by evacuation of Japanese warships at night, their losses have been heavy. All of their heavy supplies, including tanks, were abandoned on the beach. The attack was carried out by a force of 20 Stukas...

Smash Japanese In Milne Bay Area

From destruction by evacuation of Japanese warships at night, their losses have been heavy. All of their heavy supplies, including tanks, were abandoned on the beach. The attack was carried out by a force of 20 Stukas...

Smash Japanese In Milne Bay Area

From destruction by evacuation of Japanese warships at night, their losses have been heavy. All of their heavy supplies, including tanks, were abandoned on the beach. The attack was carried out by a force of 20 Stukas...

Smash Japanese In Milne Bay Area

From destruction by evacuation of Japanese warships at night, their losses have been heavy. All of their heavy supplies, including tanks, were abandoned on the beach. The attack was carried out by a force of 20 Stukas...

Smash Japanese In Milne Bay Area

From destruction by evacuation of Japanese warships at night, their losses have been heavy. All of their heavy supplies, including tanks, were abandoned on the beach. The attack was carried out by a force of 20 Stukas...

Smash Japanese In Milne Bay Area

From destruction by evacuation of Japanese warships at night, their losses have been heavy. All of their heavy supplies, including tanks, were abandoned on the beach. The attack was carried out by a force of 20 Stukas...

Smash Japanese In Milne Bay Area

From destruction by evacuation of Japanese warships at night, their losses have been heavy. All of their heavy supplies, including tanks, were abandoned on the beach. The attack was carried out by a force of 20 Stukas...

Smash Japanese In Milne Bay Area

From destruction by evacuation of Japanese warships at night, their losses have been heavy. All of their heavy supplies, including tanks, were abandoned on the beach. The attack was carried out by a force of 20 Stukas...

Smash Japanese In Milne Bay Area

From destruction by evacuation of Japanese warships at night, their losses have been heavy. All of their heavy supplies, including tanks, were abandoned on the beach. The attack was carried out by a force of 20 Stukas...

Smash Japanese In Milne Bay Area

From destruction by evacuation of Japanese warships at night, their losses have been heavy. All of their heavy supplies, including tanks, were abandoned on the beach. The attack was carried out by a force of 20 Stukas...

Smash Japanese In Milne Bay Area

From destruction by evacuation of Japanese warships at night, their losses have been heavy. All of their heavy supplies, including tanks, were abandoned on the beach. The attack was carried out by a force of 20 Stukas...

Smash Japanese In Milne Bay Area

From destruction by evacuation of Japanese warships at night, their losses have been heavy. All of their heavy supplies, including tanks, were abandoned on the beach. The attack was carried out by a force of 20 Stukas...

Smash Japanese In Milne Bay Area

From destruction by evacuation of Japanese warships at night, their losses have been heavy. All of their heavy supplies, including tanks, were abandoned on the beach. The attack was carried out by a force of 20 Stukas...

Smash Japanese In Milne Bay Area

From destruction by evacuation of Japanese warships at night, their losses have been heavy. All of their heavy supplies, including tanks, were abandoned on the beach. The attack was carried out by a force of 20 Stukas...

Smash Japanese In Milne Bay Area

From destruction by evacuation of Japanese warships at night, their losses have been heavy. All of their heavy supplies, including tanks, were abandoned on the beach. The attack was carried out by a force of 20 Stukas...

Smash Japanese In Milne Bay Area

From destruction by evacuation of Japanese warships at night, their losses have been heavy. All of their heavy supplies, including tanks, were abandoned on the beach. The attack was carried out by a force of 20 Stukas...

Smash Japanese In Milne Bay Area

From destruction by evacuation of Japanese warships at night, their losses have been heavy. All of their heavy supplies, including tanks, were abandoned on the beach. The attack was carried out by a force of 20 Stukas...

Smash Japanese In Milne Bay Area

From destruction by evacuation of Japanese warships at night, their losses have been heavy. All of their heavy supplies, including tanks, were abandoned on the beach. The attack was carried out by a force of 20 Stukas...

Smash Japanese In Milne Bay Area

From destruction by evacuation of Japanese warships at night, their losses have been heavy. All of their heavy supplies, including tanks, were abandoned on the beach. The attack was carried out by a force of 20 Stukas...

Smash Japanese In Milne Bay Area

From destruction by evacuation of Japanese warships at night, their losses have been heavy. All of their heavy supplies, including tanks, were abandoned on the beach. The attack was carried out by a force of 20 Stukas...

Smash Japanese In Milne Bay Area

From destruction by evacuation of Japanese warships at night, their losses have been heavy. All of their heavy supplies, including tanks, were abandoned on the beach. The attack was carried out by a force of 20 Stukas...

Smash Japanese In Milne Bay Area

From destruction by evacuation of Japanese warships at night, their losses have been heavy. All of their heavy supplies, including tanks, were abandoned on the beach. The attack was carried out by a force of 20 Stukas...

Smash Japanese In Milne Bay Area

From destruction by evacuation of Japanese warships at night, their losses have been heavy. All of their heavy supplies, including tanks, were abandoned on the beach. The attack was carried out by a force of 20 Stukas...

Smash Japanese In Milne Bay Area

From destruction by evacuation of Japanese warships at night, their losses have been heavy. All of their heavy supplies, including tanks, were abandoned on the beach. The attack was carried out by a force of 20 Stukas...

Smash Japanese In Milne Bay Area

From destruction by evacuation of Japanese warships at night, their losses have been heavy. All of their heavy supplies, including tanks, were abandoned on the beach. The attack was carried out by a force of 20 Stukas...

Smash Japanese In Milne Bay Area

From destruction by evacuation of Japanese warships at night, their losses have been heavy. All of their heavy supplies, including tanks, were abandoned on the beach. The attack was carried out by a force of 20 Stukas...

Smash Japanese In Milne Bay Area

From destruction by evacuation of Japanese warships at night, their losses have been heavy. All of their heavy supplies, including tanks, were abandoned on the beach. The attack was carried out by a force of 20 Stukas...

Smash Japanese In Milne Bay Area

From destruction by evacuation of Japanese warships at night, their losses have been heavy. All of their heavy supplies, including tanks, were abandoned on the beach. The attack was carried out by a force of 20 Stukas...

Smash Japanese In Milne Bay Area

From destruction by evacuation of Japanese warships at night, their losses have been heavy. All of their heavy supplies, including tanks, were abandoned on the beach. The attack was carried out by a force of 20 Stukas...

Smash Japanese In Milne Bay Area

From destruction by evacuation of Japanese warships at night, their losses have been heavy. All of their heavy supplies, including tanks, were abandoned on the beach. The attack was carried out by a force of 20 Stukas...

Smash Japanese In Milne Bay Area

From destruction by evacuation of Japanese warships at night, their losses have been heavy. All of their heavy supplies, including tanks, were abandoned on the beach. The attack was carried out by a force of 20 Stukas...

Smash Japanese In Milne Bay Area

From destruction by evacuation of Japanese warships at night, their losses have been heavy. All of their heavy supplies, including tanks, were abandoned on the beach. The attack was carried out by a force of 20 Stukas...

Smash Japanese In Milne Bay Area

From destruction by evacuation of Japanese warships at night, their losses have been heavy. All of their heavy supplies, including tanks, were abandoned on the beach. The attack was carried out by a force of 20 Stukas...

Smash Japanese In Milne Bay Area

From destruction by evacuation of Japanese warships at night, their losses have been heavy. All of their heavy supplies, including tanks, were abandoned on the beach. The attack was carried out by a force of 20 Stukas...

Smash Japanese In Milne Bay Area

From destruction by evacuation of Japanese warships at night, their losses have been heavy. All of their heavy supplies, including tanks, were abandoned on the beach. The attack was carried out by a force of 20 Stukas...

Smash Japanese In Milne Bay Area

From destruction by evacuation of Japanese warships at night, their losses have been heavy. All of their heavy supplies, including tanks, were abandoned on the beach. The attack was carried out by a force of 20 Stukas...

Smash Japanese In Milne Bay Area

From destruction by evacuation of Japanese warships at night, their losses have been heavy. All of their heavy supplies, including tanks, were abandoned on the beach. The attack was carried out by a force of 20 Stukas...

Smash Japanese In Milne Bay Area

From destruction by evacuation of Japanese warships at night, their losses have been heavy. All of their heavy supplies, including tanks, were abandoned on the beach. The attack was carried out by a force of 20 Stukas...

Smash Japanese In Milne Bay Area

From destruction by evacuation of Japanese warships at night, their losses have been heavy. All of their heavy supplies, including tanks, were abandoned on the beach. The attack was carried out by a force of 20 Stukas...

Smash Japanese In Milne Bay Area

From destruction by evacuation of Japanese warships at night, their losses have been heavy. All of their heavy supplies, including tanks, were abandoned on the beach. The attack was carried out by a force of 20 Stukas...

Smash Japanese In Milne Bay Area

From destruction by evacuation of Japanese warships at night, their losses have been heavy. All of their heavy supplies, including tanks, were abandoned on the beach. The attack was carried out by a force of 20 Stukas...

Smash Japanese In Milne Bay Area

From destruction by evacuation of Japanese warships at night, their losses have been heavy. All of their heavy supplies, including tanks, were abandoned on the beach. The attack was carried out by a force of 20 Stukas...

Smash Japanese In Milne Bay Area

From destruction by evacuation of Japanese warships at night, their losses have been heavy. All of their heavy supplies, including tanks, were abandoned on the beach. The attack was carried out by a force of 20 Stukas...

Smash Japanese In Milne Bay Area

From destruction by evacuation of Japanese warships at night, their losses have been heavy. All of their heavy supplies, including tanks, were abandoned on the beach. The attack was carried out by a force of 20 Stukas...

Smash Japanese In Milne Bay Area

From destruction by evacuation of Japanese warships at night, their losses have been heavy. All of their heavy supplies, including tanks, were abandoned on the beach. The attack was carried out by a force of 20 Stukas...

Smash Japanese In Milne Bay Area

From destruction by evacuation of Japanese warships at night, their losses have been heavy. All of their heavy supplies, including tanks, were abandoned on the beach. The attack was carried out by a force of 20 Stukas...

Smash Japanese In Milne Bay Area

From destruction by evacuation of Japanese warships at night, their losses have been heavy. All of their heavy supplies, including tanks, were abandoned on the beach. The attack was carried out by a force of 20 Stukas...

Smash Japanese In Milne Bay Area

From destruction by evacuation of Japanese warships at night, their losses have been heavy. All of their heavy supplies, including tanks, were abandoned on the beach. The attack was carried out by a force of 20 Stukas...

Smash Japanese In Milne Bay Area

From destruction by evacuation of Japanese warships at night, their losses have been heavy. All of their heavy supplies, including tanks, were abandoned on the beach. The attack was carried out by a force of 20 Stukas...

Smash Japanese In Milne Bay Area

From destruction by evacuation of Japanese warships at night, their losses have been heavy. All of their heavy supplies, including tanks, were abandoned on the beach. The attack was carried out by a force of 20 Stukas...

Smash Japanese In Milne Bay Area

From destruction by evacuation of Japanese warships at night, their losses have been heavy. All of their heavy supplies, including tanks, were abandoned on the beach. The attack was carried out by a force of 20 Stukas...

Smash Japanese In Milne Bay Area

From destruction by evacuation of Japanese warships at night, their losses have been heavy. All of their heavy supplies, including tanks, were abandoned on the beach. The attack was carried out by a force of 20 Stukas...

Smash Japanese In Milne Bay Area

From destruction by evacuation of Japanese warships at night, their losses have been heavy. All of their heavy supplies, including tanks, were abandoned on the beach. The attack was carried out by a force of 20 Stukas...

Smash Japanese In Milne Bay Area

From destruction by evacuation of Japanese warships at night, their losses have been heavy. All of their heavy supplies, including tanks, were abandoned on the beach. The attack was carried out by a force of 20 Stukas...

Smash Japanese In Milne Bay Area

From destruction by evacuation of Japanese warships at night, their losses have been heavy. All of their heavy supplies, including tanks, were abandoned on the beach. The attack was carried out by a force of 20 Stukas...

Smash Japanese In Milne Bay Area

From destruction by evacuation of Japanese warships at night, their losses have been heavy. All of their heavy supplies, including tanks, were abandoned on the beach. The attack was carried out by a force of 20 Stukas...

Smash Japanese In Milne Bay Area

From destruction by evacuation of Japanese warships at night, their losses have been heavy. All of their heavy supplies, including tanks, were abandoned on the beach. The attack was carried out by a force of 20 Stukas...

Smash Japanese In Milne Bay Area

From destruction by evacuation of Japanese warships at night, their losses have been heavy. All of their heavy supplies, including tanks, were abandoned on the beach. The attack was carried out by a force of 20 Stukas...

Smash Japanese In Milne Bay Area

From destruction by evacuation of Japanese warships at night, their losses have been heavy. All of their heavy supplies, including tanks, were abandoned on the beach. The attack was carried out by a force of 20 Stukas...

Smash Japanese In Milne Bay Area

From destruction by evacuation of Japanese warships at night, their losses have been heavy. All of their heavy supplies, including tanks, were abandoned on the beach. The attack was carried out by a force of 20 Stukas...

Smash Japanese In Milne Bay Area

From destruction by evacuation of Japanese warships at night, their losses have been heavy. All of their heavy supplies, including tanks, were abandoned on the beach. The attack was carried out by a force of 20 Stukas...

Smash Japanese In Milne Bay Area

From destruction by evacuation of Japanese warships at night, their losses have been heavy. All of their heavy supplies, including tanks, were abandoned on the beach. The attack was carried out by a force of 20 Stukas...

Smash Japanese In Milne Bay Area

From destruction by evacuation of Japanese warships at night, their losses have been heavy. All of their heavy supplies, including tanks, were abandoned on the beach. The attack was carried out by a force of 20 Stukas...

Smash Japanese In Milne Bay Area

From destruction by evacuation of Japanese warships at night, their losses have been heavy. All of their heavy supplies, including tanks, were abandoned on the beach. The attack was carried out by a force of 20 Stukas...

Smash Japanese In Milne Bay Area

From destruction by evacuation of Japanese warships at night, their losses have been heavy. All of their heavy supplies, including tanks, were abandoned on the beach. The attack was carried out by a force of 20 Stukas...

Smash Japanese In Milne Bay Area

From destruction by evacuation of Japanese warships at night, their losses have been heavy. All of their heavy supplies, including tanks, were abandoned on the beach. The attack was carried out by a force of 20 Stukas...

Smash Japanese In Milne Bay Area

From destruction by evacuation of Japanese warships at night, their losses have been heavy. All of their heavy supplies, including tanks, were abandoned on the beach. The attack was carried out by a force of 20 Stukas...

Smash Japanese In Milne Bay Area

From destruction by evacuation of Japanese warships at night, their losses have



# News From Manchester's Neighbors

## Rockville

Louis H. Chapman, 66, Rockville

## Special Town Meeting Tonight

To Be Held at Rockville To Take Action on Various Funds.

Rockville, Aug. 31 (Special)—A special town meeting will be held this evening at the Town Hall for the purpose of transferring money from the contingent fund to special funds. The meeting will be held at eight o'clock and the following resolution will be presented: "Resolved, That the sum of \$2,000 be transferred from the Contingent fund to the following: \$1,000 to the Public Works fund, \$500 to the Public Health fund, \$500 to the Public Safety fund."

## Bolton

Mrs. Clyde Marshall, 4022, Bolton

## Stafford Springs

John O. Netto, 472, Stafford Springs

## Tolland

Mrs. John H. Steele, 1172, Tolland

## Wapping

Mrs. W. W. Grant, 274, Wapping

## Willington

Miss Jennie H. Church, 1172, Willington

## North Coventry

G. F. Beer, 492-3, North Coventry

## Advertising Seen As Misleading

Washington, Aug. 31.—The Federal Trade Commission announced today that it had issued orders against the American Cigarette and Paper Company, Inc., both of New York, charging misrepresentation in cigarette advertising.

## Births Defused

Berlin, Pa., Aug. 31.—When the city council picked up the body of a woman, it was found to be that of a woman who had been in the city for some time.

## Quilts Made

Quilts were made for the Red Cross by the women of the town.

## Wapping

Local War Price and Rationing Boards are to be enlarged to 12 members and a chairman and chairwoman to be set up.

## Wapping

Local War Price and Rationing Boards are to be enlarged to 12 members and a chairman and chairwoman to be set up.

## Wapping

Local War Price and Rationing Boards are to be enlarged to 12 members and a chairman and chairwoman to be set up.

## Wapping

Local War Price and Rationing Boards are to be enlarged to 12 members and a chairman and chairwoman to be set up.

## Wapping

Local War Price and Rationing Boards are to be enlarged to 12 members and a chairman and chairwoman to be set up.

## Wapping

Local War Price and Rationing Boards are to be enlarged to 12 members and a chairman and chairwoman to be set up.

## Wapping

Local War Price and Rationing Boards are to be enlarged to 12 members and a chairman and chairwoman to be set up.

## Wapping

Local War Price and Rationing Boards are to be enlarged to 12 members and a chairman and chairwoman to be set up.

## Wapping

Local War Price and Rationing Boards are to be enlarged to 12 members and a chairman and chairwoman to be set up.

## Wapping

Local War Price and Rationing Boards are to be enlarged to 12 members and a chairman and chairwoman to be set up.

## Wapping

Local War Price and Rationing Boards are to be enlarged to 12 members and a chairman and chairwoman to be set up.

## Wapping

Local War Price and Rationing Boards are to be enlarged to 12 members and a chairman and chairwoman to be set up.

## Wapping

Local War Price and Rationing Boards are to be enlarged to 12 members and a chairman and chairwoman to be set up.

## Wapping

Mrs. W. W. Grant, 274, Wapping

## Wapping

Mrs. W. W. Grant, 274, Wapping

## Wapping

Mrs. W. W. Grant, 274, Wapping

## Wapping

Mrs. W. W. Grant, 274, Wapping

## Wapping

Mrs. W. W. Grant, 274, Wapping

## Wapping

Mrs. W. W. Grant, 274, Wapping

## Wapping

Mrs. W. W. Grant, 274, Wapping

## Wapping

Mrs. W. W. Grant, 274, Wapping

## Wapping

Mrs. W. W. Grant, 274, Wapping

## Wapping

Mrs. W. W. Grant, 274, Wapping

## Wapping

Mrs. W. W. Grant, 274, Wapping

## Wapping

Mrs. W. W. Grant, 274, Wapping

## Wapping

Mrs. W. W. Grant, 274, Wapping

## Wapping

Mrs. W. W. Grant, 274, Wapping

## Wapping

Mrs. W. W. Grant, 274, Wapping

## Wapping

Mrs. W. W. Grant, 274, Wapping

## Wapping

Mrs. W. W. Grant, 274, Wapping

## Wapping

Mrs. W. W. Grant, 274, Wapping

## Wapping

Mrs. W. W. Grant, 274, Wapping

## Wapping

Mrs. W. W. Grant, 274, Wapping

## Wapping

Mrs. W. W. Grant, 274, Wapping

## Wapping

Mrs. W. W. Grant, 274, Wapping

## Wapping

Mrs. W. W. Grant, 274, Wapping

## Wapping

Mrs. W. W. Grant, 274, Wapping

## Wapping

Mrs. W. W. Grant, 274, Wapping

## Wapping

Mrs. W. W. Grant, 274, Wapping

## Wapping

Mrs. W. W. Grant, 274, Wapping

## Wapping

Mrs. W. W. Grant, 274, Wapping

## Wapping

Mrs. W. W. Grant, 274, Wapping

## Wapping

Mrs. W. W. Grant, 274, Wapping

## Wapping

Mrs. W. W. Grant, 274, Wapping

## Wapping

Mrs. W. W. Grant, 274, Wapping

## Wapping

Mrs. W. W. Grant, 274, Wapping

## Wapping

Mrs. W. W. Grant, 274, Wapping

## Wapping

Mrs. W. W. Grant, 274, Wapping

## Wapping

Mrs. W. W. Grant, 274, Wapping

## Wapping

Mrs. W. W. Grant, 274, Wapping

## Wapping

Mrs. W. W. Grant, 274, Wapping

## Wapping

Mrs. W. W. Grant, 274, Wapping

## Wapping

Mrs. W. W. Grant, 274, Wapping

## Wapping

Mrs. W. W. Grant, 274, Wapping

## Wapping

Mrs. W. W. Grant, 274, Wapping

## Wapping

Mrs. W. W. Grant, 274, Wapping

## Wapping

Mrs. W. W. Grant, 274, Wapping

## Wapping

Mrs. W. W. Grant, 274, Wapping

## Wapping

Mrs. W. W. Grant, 274, Wapping

## Wapping

Mrs. W. W. Grant, 274, Wapping

## Wapping

Mrs. W. W. Grant, 274, Wapping

## Wapping

Mrs. W. W. Grant, 274, Wapping

## Wapping

Mrs. W. W. Grant, 274, Wapping

## Wapping

Mrs. W. W. Grant, 274, Wapping

## Wapping

Mrs. W. W. Grant, 274, Wapping

## Wapping

Mrs. W. W. Grant, 274, Wapping

## Wapping

Mrs. W. W. Grant, 274, Wapping

## Wapping

Mrs. W. W. Grant, 274, Wapping

## Wapping

Mrs. W. W. Grant, 274, Wapping

## Wapping

Mrs. W. W. Grant, 274, Wapping

## Wapping

Mrs. W. W. Grant, 274, Wapping

## Wapping

Mrs. W. W. Grant, 274, Wapping

## Wapping

Mrs. W. W. Grant, 274, Wapping

## Wapping

Mrs. W. W. Grant, 274, Wapping

## Wapping

Mrs. W. W. Grant, 274, Wapping

## Wapping

Mrs. W. W. Grant, 274, Wapping

## Wapping

Mrs. W. W. Grant, 274, Wapping

## Wapping

Mrs. W. W. Grant, 274, Wapping

## Wapping

Mrs. W. W. Grant, 274, Wapping

## Wapping

Mrs. W. W. Grant, 274, Wapping

## Wapping

Mrs. W. W. Grant, 274, Wapping

## Wapping

Mrs. W. W. Grant, 274, Wapping

## Wapping

Mrs. W. W. Grant, 274, Wapping

## Wapping

Mrs. W. W. Grant, 274, Wapping

## Wapping

Mrs. W. W. Grant, 274, Wapping

## Wapping

Mrs. W. W. Grant, 274, Wapping

## Wapping

Mrs. W. W. Grant, 274, Wapping

## Wapping

Mrs. W. W. Grant, 274, Wapping

## Wapping

Mrs. W. W. Grant, 274, Wapping

## Wapping

Mrs. W. W. Grant, 274, Wapping

## Wapping

Mrs. W. W. Grant, 274, Wapping

## Wapping

Mrs. W. W. Grant, 274, Wapping

## Wapping

Mrs. W. W. Grant, 274, Wapping

## Wapping

Mrs. W. W. Grant, 274, Wapping

## Wapping

Mrs. W. W. Grant, 274, Wapping

## Wapping

Mrs. W. W. Grant, 274, Wapping

## Wapping

Mrs. W. W. Grant, 274, Wapping

## Wapping

Mrs. W. W. Grant, 274, Wapping

## Wapping

Mrs. W. W. Grant, 274, Wapping

## Wapping

Mrs. W. W. Grant, 274, Wapping

## Wapping

Mrs. W. W. Grant, 274, Wapping

## Wapping

Mrs. W. W. Grant, 274, Wapping

## Wapping

Mrs. W. W. Grant, 274, Wapping

## Wapping

Mrs. W. W. Grant, 274, Wapping

## Wapping

Mrs. W. W. Grant, 274, Wapping

## Wapping

Mrs. W. W. Grant, 274, Wapping

## Wapping

Mrs. W. W. Grant, 274, Wapping

## Wapping

Mrs. W. W. Grant, 274, Wapping

## Wapping

Mrs. W. W. Grant, 274, Wapping

## Wapping

Mrs. W. W. Grant, 274, Wapping

## Wapping

Mrs. W. W. Grant, 274, Wapping

## Wapping

Mrs. W. W. Grant, 274, Wapping

## Wapping

Mrs. W. W. Grant, 274, Wapping

## Wapping

Mrs. W. W. Grant, 274, Wapping

## Wapping

Mrs. W. W. Grant, 274, Wapping

## Wapping

Mrs. W. W. Grant, 274, Wapping

## Wapping

Mrs. W. W. Grant, 274, Wapping

## Wapping

Mrs. W. W. Grant, 274, Wapping

## Wapping

Mrs. W. W. Grant, 274, Wapping

## Wapping

Mrs. W. W. Grant, 274, Wapping

## Wapping

Mrs. W. W. Grant, 274, Wapping

## Wapping

Mrs. W. W. Grant, 274, Wapping

## Wapping







City's Wants Classified For Your Benefit TO BUY TO SELL

Announcements 2 Auto Accessories—Tires 6 Help Wanted—Female 35 Household Goods 51 Wanted—Rooms—Board 62 Houses for Sale 72
MOTORCYCLES—Bicycles 11
BUILDING—Contracting 14
MOVING—TRUCKING—Storage 20
REPAIRING 23
DO YOU HAVE ADEQUATE INSURANCE?
FOR SALE
MACHINE SHOP IN OPERATION
GIRLS AND WOMEN WANTED!
Zoning Board of Appeals
Notice
EVENING AUCTION
Wide Assortment of Household Furniture
at REID'S AUCTIONEER
Bolton, Conn.
Wednesday Evening, Sept. 2 at 6:30 P. M.
PARTIAL LIST: Porch Furniture, Beds, Stands, Books, etc.

1941 Pontiac Convertible
Coupe. Driven only 10,718 miles. All 5 tires are like new. Equipped with Deluxe Radio, Heater, and Defroster. Its color is a Beautiful Florida Blue Gray Finish. Black automatic top, cigar lighter, electric clock, two sun visors. White wall tires.
Priced For A Quick Sale At... \$1195
Terms Are Only \$12.00 Weekly. Trades Accepted. See Finance Manager At BRUNNER'S 80 OAKLAND ST. Tel. 5191 Open Evenings
Your Packard Dealer. Ask the Man Who Flies One.

RED RYDER Spooks?
BY FRED HARMAN
FEYOWO-O!
GREAT ZIGZAGS! WHAT'S THAT?
For this attractive pattern, send 15c in coin, your name, address, pattern number and size to The Fashion Book Co., 106 1/2 Broadway, New York, N. Y.
Have you seen the new Fashion Book... it's better than ever. Contains scores of new patterns, helpful sewing information, a free pattern for a clever beret. Send for your copy today.
Pattern 15c, Pattern Book 15c. One Pattern and Pattern Book ordered together 25c. Enclose 1c postage for each pattern.

Sense and Nonsense

And That Settles That...
Government Official—Just what kind of a job do you want under the War program?
Application—A job as chief liaison officer for wireless telephone service.
I've worked for a silver lining. I've worked for a silver lining! I've saved for a friend; and ever the work was willing, though much to mend.
Tet for the year's achieving little I find.
Worth pride, or hope, or grieving, or calling to mind.
But love and laughing youth and a rain-washed spring;
These were truth, and a memorable thing.

FUNNY BUSINESS
HEROES ARE MADE—NOT BORN
No, no, no sabotage—the tuba player's got hay fever!
The wife came home breathless after a hard day of shopping; I've got one of those new hats without a crown, and an dress without a back, and an dress without a bust.
Husband (grunting)—You think that's something! Look at this suit of mine; it has pockets without money!
Labor Day is a holiday that reminds us of the glory and dignity of the privileges of working and thus contributing to the winning of the war.
A friendly old lady passed a little black dog on her way to church. She was making multi-ple. Questioning the little dog the woman finally asked:
Old woman—And where were you born?
Child—I wasn't born at all. I've got a stepmother.

SIDE GLANCES BY GALBRAITH
HOLD EVERYTHING
TOONERVILLE FOLKS BY FONTAINE FOX
ALLEY OOP Stopped Him Cold BY V. T. HAMLIN
FRECKLES AND HIS FRIENDS The Way To A Man's Heart BY MERRILL BLOSSER

Giant Strawberry Potholder
By Mrs. Anne Cabot
It's like a strawberry out of a fairy tale—a giant berry 7 by 14 inches! Item is 2 1/2 inches long and the bright green leaves are crocheted separately and then sewn on. Strawberry is hand-crocheted and "wooded" with the green.
You'll need one ball of bright green yarn and one ball of white yarn. Strawberry is hand-crocheted and "wooded" with the green.
You'll need one ball of bright green yarn and one ball of white yarn. Strawberry is hand-crocheted and "wooded" with the green.
You'll need one ball of bright green yarn and one ball of white yarn. Strawberry is hand-crocheted and "wooded" with the green.

Great News! LANK LEONARD

MICKY FINN
OUT OUR WAY BY J. R. WILLIAMS
OUR BOARDING HOUSE WITH MAJOR HOOPLE

JEHOSHAPHAT, IT'S MARTHA'S VOICE—I'LL TYPHOE OUT THE BACK DOOR!
WHY HULLO, MARTHA! WOTTA SUPPRISE! WHERE YOU BEEN? MEET MISTER GZZZZ AN' MISTER GZZZZ!
WHAT KIND OF ZOO IS THIS? WHO ARE THESE CHIMPANZEEZ? WERE ANY OF THEM MIRRORS? WHERE IS THAT BIG TOAD?

BOOTS AND HER BUDDIES The Injustice Of It All BY EDGAR MARTIN
EVERYTHING WAS SO QUIET AND PEACEFUL BEFORE THEY CAME
ALL I WANTED WAS TO GET AWAY FROM IT ALL
THEY SIMPLY WOULD GIVE ME A MOMENT'S PEACE
OH STEPHEN—YOU DO COOK UP THE GRANDEST LIES! LIVE SO CRUEL!
WELL, HERE'S OUR STATION, CAPTAIN BASH. THE BRITISH HAVE TURNED OVER AN AIR BASE TO US HERE. PUT AS I WAS SAYING, IT IS ABSOLUTELY IMPERATIVE THAT WE GET GERMANIES OUT OF THAT GERMAN CONCENTRATION CAMP.
DOUBT'S HAVE BEEN EXPRESSED WHETHER IT'S POSSIBLE, FRANKLY, I DON'T KNOW, HOWEVER, IT'S A MATTER OF SUCH GRAVE IMPORTANCE THAT A RESCUE SIMPLY MUST BE ATTEMPTED.
AND IF I FAIL?
WOULD BE REPORTED MISSING IN ACTION? AND THE GERMAN GESTAPO WILL VERY LIKELY FORCE OBLIVIOUS TO REVEAL THE SECRET OF HIS REMOTE CONTROL FLYING DISPERSE A DEUCE OF SUCH POTENTIAL IMPORTANCE THAT IT MAY POSSIBLY AFFECT THE COURSE OF THE WAR.

WASH TUBS Background BY ROY CRANE
WELL, HERE'S OUR STATION, CAPTAIN BASH. THE BRITISH HAVE TURNED OVER AN AIR BASE TO US HERE. PUT AS I WAS SAYING, IT IS ABSOLUTELY IMPERATIVE THAT WE GET GERMANIES OUT OF THAT GERMAN CONCENTRATION CAMP.
DOUBT'S HAVE BEEN EXPRESSED WHETHER IT'S POSSIBLE, FRANKLY, I DON'T KNOW, HOWEVER, IT'S A MATTER OF SUCH GRAVE IMPORTANCE THAT A RESCUE SIMPLY MUST BE ATTEMPTED.
AND IF I FAIL?
WOULD BE REPORTED MISSING IN ACTION? AND THE GERMAN GESTAPO WILL VERY LIKELY FORCE OBLIVIOUS TO REVEAL THE SECRET OF HIS REMOTE CONTROL FLYING DISPERSE A DEUCE OF SUCH POTENTIAL IMPORTANCE THAT IT MAY POSSIBLY AFFECT THE COURSE OF THE WAR.



About Town

Mrs. Agnes Ellis, of 37 Cottage street, who underwent a major operation at the Hartford hospital, is progressing favorably and expects to be home within a few weeks.

Private Joseph O'Hara, son of Mr. and Mrs. Andrew O'Hara, of 192 Wehaver street, Muskogee, Oklahoma.

Negro Students Render Program

A large and appreciative audience attended the morning service at the Center church Sunday when a group of Negro college students sang a series of Negro spirituals. There were 28 in the group and they sang without accompaniment.

Announcement

HUGO S. PEARSON Dealer in Range and Fuel Oil and Ice Has Moved From 187 Maple Street To 113 Pearl St. Same Phone Connection.

Tuesday... At HALE'S

Chatham 72"x90" "Madison" Solid Color Blankets \$2.98

Other Chatham Blankets \$2.98 - \$4.98 - \$5.98

New Fall Washable Dress Plaids 50c

Special! 50% Linen Multi Color Striped DISH TOWELS 4 for \$1.00

Double 2x4 Green Stamps Given With Cash Sales All Day Tuesday

The J.W. HALE CORP. MANCHESTER CONN.

Party Is Given For Cy Blanchard

Cy Blanchard, who leaves for the Coast Guard next Friday, was honored at a party by also mates from the Hamilton Project.

Mr. Frank C. Robinson of 204 Hartford Road, who underwent an operation at the Hartford hospital, is progressing favorably and expects to be home within a few weeks.

HALE'S SELF SERVE AND HEALTH MARKET

- Pineapple Juice 2 Cans 33c
Corn Flakes Pkg. 6c
Salt (2-Pound Box) 2 for 15c
Potato Chips Can 55c
Liquid Fertilizer Bl. 23c
Vano Qt. Bl. 27c
Loaf Cake 20c
Sweetheart Soap Combination 4 for 21c
Flour 24 1/2-lb. Bag \$1.19
Green Peppers Bkt. 49c
Apples 16-Qt. Bkt. 89c
Sweet Corn Doz. 25c

HEALTH MARKET Keep up American morale with daily normal, healthful menus, observing of course, any special suggestions by the government.

DOUBLE STAMPS Given With Cash Sales In Both These Stores All Day Tuesday. The J.W. HALE CORP. MANCHESTER CONN. C.E. HOUSE-SON, INC.

The W.G. Glenney Co. And Employees URGE YOU TO BUY BONDS YOUR Share FOR VICTORY

EVERYBODY EVERY PAYDAY 10% During September - Payroll Savings Month. Salute To Our Heroes And To Labor. Every Bond You Buy Is An Investment In Fighting Equipment For Our Fighting Men.

Manchester's Half Million Dollar War Bond Drive Starts Today

Average Daily Circulation For the Month of August, 1942: 7,530

Fighters Strafing Remnants of Japanese Milne Bay Forces

Severe Night Attack Is Made on Nipponese Air Base at Lae; Skirmishes on Land Develop at Salamaua; Kokoda Battle Is Sharp.

General MacArthur's Headquarters, Australia, Sept. 1.—(AP)—Allied fighter planes roared above the Milne Bay jungles today heavily strafing any Japanese remnants left by the veterans.

General MacArthur's Headquarters, Australia, Sept. 1.—(AP)—Allied fighter planes roared above the Milne Bay jungles today heavily strafing any Japanese remnants left by the veterans.

Chinese Rout Fresh Units To Aid Japs Fight Reinforcements Effort to Halt Soldiers Nearing Kinshwa.

Death Weapon Being Sought Boston Police Muster Volunteer Aid in Stabbing of Woman.

Three Persons Blast Victims Undetermined Number Injured at New Jersey Fulgent Plant Today.

Explosives Enough to Blow Up Half of Belfast in Seized Cache.

Nation Prepares to Care For New War Veterans

Germans Captured in Don Area Fighting

This scene, transmitted by radio from Moscow to New York, is described by Russian sources as the capture of several Germans by Soviet troops in the Don area where fighting has been severe for several weeks.

Major Battle Seen Developing As Germans Drive Eight Miles

London, Sept. 1.—(AP)—An eight-mile German drive into the middlelands on the southern flank of the El Alamein line in Egypt, rimming the Qattara depression, was reported today in a Reuters dispatch from Cairo.

Fight Fiercely As Axis Units Make Attack Battle Raging for More Than 24 Hours on Central and Southern Sectors of El Alamein Line.

Chinese Rout Fresh Units To Aid Japs Fight Reinforcements Effort to Halt Soldiers Nearing Kinshwa.

Death Weapon Being Sought Boston Police Muster Volunteer Aid in Stabbing of Woman.

Explosives Enough to Blow Up Half of Belfast in Seized Cache.

Nation Prepares to Care For New War Veterans

Nazis Push Forward on Southern Flank in Egypt; American Air Forces Go into Action.

London, Sept. 1.—(AP)—An eight-mile German drive into the middlelands on the southern flank of the El Alamein line in Egypt, rimming the Qattara depression, was reported today in a Reuters dispatch from Cairo.

Middle East Area Is Key Of Strategy Land Bridge from Egyptian Desert to Must Be Held.

London, Sept. 1.—(AP)—Three years after Hitler hurled his war machine against Poland and sawed the seed of global war, a key to Allied strategy lay today in the great Middle East land bridge from the Egyptian desert to the Caucasus.

Strikes Peril In Pittsburgh Truck Drivers, Timbermen, Cranemen and Shopworkers Involved in Disputes on Pay.

Senate Voting Version Wins House Conferees Agree To Amendments of Soldiers Absentee Law.

Explosives Enough to Blow Up Half of Belfast in Seized Cache.

Nation Prepares to Care For New War Veterans

Nation Prepares to Care For New War Veterans

Nazis Deepen Wedge in Stalingrad Area; Claim Anapa Seized

Germans Break Stiff Resistance by Russians To Reach Coast of Black Sea Below Kuban River; Gap Below Stalingrad in Defenses Widened; Important Height Taken.

Berlin (From German Broadcasts), Sept. 1.—(AP)—The German high command declared today that Axis forces, breaking stiff Russian resistance, had reached the coast of the Black Sea below the Kuban river and had occupied the port of Anapa.

Strikes Peril In Pittsburgh Truck Drivers, Timbermen, Cranemen and Shopworkers Involved in Disputes on Pay.

Senate Voting Version Wins House Conferees Agree To Amendments of Soldiers Absentee Law.

Explosives Enough to Blow Up Half of Belfast in Seized Cache.

Nation Prepares to Care For New War Veterans

Nation Prepares to Care For New War Veterans

Nation Prepares to Care For New War Veterans

The Weather Forecast of U. S. Weather Bureau Not quite so cool tonight.

PRICE THREE CENTS